



Kernel for GroupWise to Exchange

“Easily Migrate All Mailboxes from
Novell GroupWise to Exchange Server”

PRODUCT GUIDE

Table of Contents

1.	About Kernel for Novell GroupWise to Exchange	5
1.1	Using this Manual	5
1.2	Who should use this Software?	6
1.3	Introduction	6
2.	Getting Started	15
2.1	Installation Pre-requisites and System Requirements	15
2.2	Downloading Kernel for Novell GroupWise to Exchange software for the First Time	16
2.3	Installing Kernel for Novell GroupWise to Exchange	16
2.4	Un-installing Kernel for Novell GroupWise to Exchange	17
3.	Migration from Novell GroupWise to Exchange Server	18
3.1	Single Mailbox Migration	18
3.2	Multiple Mailbox Migration	29
4.	Advanced Options to make the Migration More Efficient.....	47
4.1	Migration of Archived Emails	47
4.2	Migration of all Address Books	48
4.3	Folder Selection for Batch Migration of GroupWise Mailboxes	49
4.4	Modifying GroupWise Folder Names as per Outlook/Exchange	51
5.	Difference between Evaluation and Full Version	52
6.	Purchase and Support.....	53
6.1	Purchase Kernel for Novell GroupWise to Exchange.....	53
6.2	Support Options for Kernel for Novell GroupWise to Exchange	53
7.	Legal Notices	55
7.1	Copyright	55
7.2	Trademark	55
7.3	Disclaimer	55
7.4	License Agreement	55

Table of Figures

Figure 1.1: File Menu of Main Application	7
Figure 1.2: Tool Menu of Main Application.....	8
Figure 1.3: Help Menu of Main Application	8
Figure 1.4: Status Bar of Main Application	9
Figure 1.5: File Menu of File Creator	11
Figure 1.6: Edit Menu of File Creator.....	12
Figure 1.7: View Menu of File Creator.....	12
Figure 1.8: Help Menu of File Creator.....	12
Figure 1.9: Status Bar of File Creator	14
Figure 3.1: Main window of Kernel for GroupWise to Exchange.....	18
Figure 3.2: Window showing three modes	19
Figure 3.3: Using Default Mode	20
Figure 3.4: Preview Window	21
Figure 3.5: Save Options.....	21
Figure 3.6: Saving with PST.....	22
Figure 3.7: Window asking for PST File location	22
Figure 3.8: Saving Process.....	23
Figure 3.9: Exchange Server Information.....	24
Figure 3.10: Saving in progress	25
Figure 3.11: Using Online Mode	26
Figure 3.12: Using Caching Mode.....	27
Figure 3.13: Using Remote Mode.....	28
Figure 3.14: Using Command Line Mode	29
Figure 3.15: Main window of File Creator software.....	30
Figure 3.16: GroupWise Information.....	31
Figure 3.17: Outlook/Exchange Information	32
Figure 3.18: Information for Exchange Server	33
Figure 3.19: Created Records.....	34
Figure 3.20: Saving .NUCON file	34

Figure 3.24: Excel sheet format	35
Figure 3.25: File Creator software	40
Figure 3.26: Selecting .XLS file	41
Figure 3.27: Compilation Output	42
Figure 3.28: Listing of Mailboxes.....	42
Figure 3.21: Main window.....	43
Figure 3.22: 'Open' window.....	44
Figure 3.23: .NUCON file listed.....	44
Figure 3.29: Main Window.....	45
Figure 3.30: Listing of .NUCON file.....	46
Figure 4.1: Select Archive Option	48
Figure 4.2: Message asking for exporting address book.....	48
Figure 4.3: Advance Options	49
Figure 4.4: 'Folder Selection' window	50
Figure 4.5: Modifying GroupWise Folder Names	51

1. About Kernel for Novell GroupWise to Exchange

Welcome to the user manual for Kernel for Novell GroupWise to Exchange, result oriented and effective email migration software that helps you to migrate from Novell GroupWise to MS Exchange Server. It easily exports user mailboxes, calendar, tasks, trash items, sent items, documents, checklist, work in progress, cabinet, Unicode characters, journals, notes, archives, personal address books and all the existing folders from GroupWise mailboxes and stores them in the user's new mailboxes on MS Exchange Server or to Personal Storage Files(.PST).

Kernel for Novell GroupWise to Exchange software provides secure migration to MS Exchange Server. Users can migrate Single GroupWise Mailbox or Unlimited GroupWise Mailboxes at once.

This user manual comprises step by step guidelines on using Kernel for Novell GroupWise to Exchange.

1.1 Using this Manual

This user manual is intended to guide users on using Kernel for Novell GroupWise to Exchange. We suggest that first time users should read this user manual completely and carefully before proceeding to use the software. However, if you are an experienced user, you can use the table of contents to find out information pertaining to the tasks that you need to perform by using Kernel for Novell GroupWise to Exchange. You can use the table of contents to navigate through different sections of this user manual. The table of contents lists all the sections that are contained in this user manual in chronological order. The user manual comprises the following sections:

- About Kernel for Novell GroupWise to Exchange
- Getting Started
- Migration from Novell GroupWise to Exchange Server
- Advance Options to Make the Migration More Efficient
- Difference between Evaluation and Full Version
- Purchase and Support
- Legal Notices

Certain abbreviations have been used throughout this manual. For clear understanding of the contents of this user manual, please go through the list of abbreviations, mentioned below, before reading the manual.

1.1.1 List of Abbreviations

PST: Personal Storage Files

XLS: Excel Sheet Extension

MS: Microsoft

RAM: Random Access Memory

MB: Mega-Byte

GB: Giga-Byte

1.2 Who should use this Software?

The capability and potential of Kernel for Novell GroupWise to Exchange software to perform the migration smoothly and accurately makes it the preferred and best choice for organizations that want to switch from Novell GroupWise to MS Exchange Server, which generally takes days and hours to complete.

The software is also helpful to Administrators and Technicians, who need to perform migration from Novell GroupWise Server to Microsoft Exchange Server, so their organizations can avail the advance functionalities of MS Outlook which is used in collaboration with MS Exchange Server. The need of migration from Novell GroupWise to MS Exchange Server arises due to accessibility issues, server maintenance charges, security reasons and increased help desk cost associated with Novell GroupWise server.

1.3 Introduction

Once you download the software setup of Kernel for Novell GroupWise to Exchange, two applications get installed on your system. One is the main application – Kernel for Novell GroupWise to Exchange software and second is a batch file creation tool – Kernel for Novell GroupWise to Exchange Migration File Creator. Both the applications are discussed below.

1.3.1 Kernel for Novell GroupWise to Exchange

Kernel for Novell GroupWise to Exchange is an advanced and result oriented email migration software that easily exports every item of GroupWise User Mailbox i.e. emails, contacts, calendars, sent items, trash items, documents, check list, Unicode characters, cabinet, work in progress, journals, notes, appointments, archive items, etc.

Two choices are available to the user for migration - Single Mailbox Migration and Multiple Mailboxes Migration. Single Mailbox Migration option converts one mailbox at a time whereas Multiple Mailboxes Migration option converts unlimited mailboxes at a time.

1.3.1.1 Salient Features

- Migrates from GroupWise to Exchange
- Converts Single GroupWise Mailbox
- Converts Batch of GroupWise Mailboxes
- Batch file migration through imported MS Excel worksheets
- Migrates archived GroupWise items
- Migrates complete Address Books



- Migrates securely and accurately
- Saves converted mailboxes in PST or MS Exchange Server user profile
- Supports every version of Novell GroupWise, MS Exchange Server, MS Excel and MS Outlook
- Free Evaluation version to analyze the software

1.3.1.2 Graphical User Interface

Now that Kernel for Novell GroupWise to Exchange has been installed on your computer, you can start using the software after getting acquainted with the software interface.

Menu Bar

The menu-bar of Kernel for Novell GroupWise to Exchange comprises three main menus– File, Tool and Help.

File Menu

The **File** menu comprises four menu items.

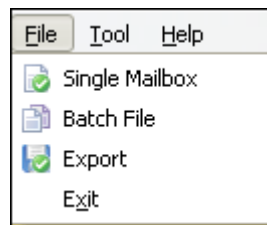


Figure 1.1: File Menu of Main Application

Menu items in the **File** menu:

Field Name	Field Description
Single Mailbox	Select to convert Single GroupWise User mailbox
Batch File	Select to convert Multiple GroupWise user mailboxes saved in a NUCON batch file
Export	Select to export/save items of the mailbox
Exit	Select to close the software

Tool Menu

The **Tool** menu comprises one menu item.

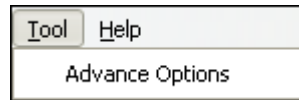


Figure 1.2: Tool Menu of Main Application

Menu items in the **Tool** menu:

Field Name	Field Description
Advance Options	Select to view advanced options to customize various activities

Help Menu

The **Help** menu comprises three menu items.








Figure 1.3: Help Menu of Main Application

Menu items in the **Help** menu:

Field Name	Field Description
Help	Select to view Users Help Manual of Kernel for Novell GroupWise to Exchange
Software home page...	Select to visit homepage of the software on our website
About Kernel for Novell GroupWise to Exchange	Select to know version information and support details of Kernel for Novell GroupWise to Exchange

Tool Bar

The tool-bar in Kernel for Novell GroupWise to Exchange is displayed below the menu-bar. The tool-bar provides a convenient and user-friendly method to perform certain actions that can also be performed by using the menu-bar. Read the information in the table below to find out about the tool-bar buttons:

Button	Button Name	Button Description
	Single Mailbox	Select to convert Single GroupWise User mailbox
	Batch File	Select to convert Multiple GroupWise user mailboxes saved in a batch file
	Export	Select to export/save items of the mailbox
	Help	Select to view Users Help manual of Kernel for Novell GroupWise to Exchange software
	Buy Online	Select to purchase Kernel for Novell GroupWise to Exchange software

Status Bar

Status bar is displayed at the bottom of the software window. The text 'www.nucleustechnologies.com' is displayed on the status bar when you open the software. This text changes according to the actions performed with the tool bar buttons. For example- Status bar displays the text 'Single File' when you put mouse on Single File button to perform single file conversion and then changes back to 'www.nucleustechnologies.com'.

The Status bar also displays the text 'CAP', 'NUM', 'SCRL' which respectively correspond to the Caps Lock, Num Lock, and Scroll Lock keys on your keyboard. If any of these keys are pressed, the color of the corresponding text will turn blue/black.

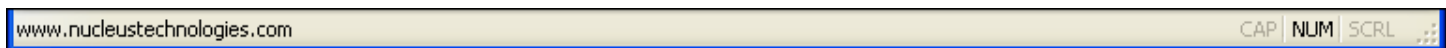
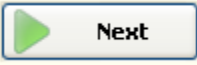

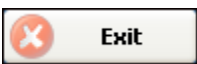
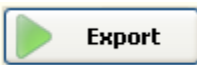



Figure 1.4: Status Bar of Main Application

Buttons Used

Apart from the standard options available in the menu-bar and the tool-bar, following are the main buttons used throughout the software working.

	Click to go to the next screen
	Click to go back to the previous screen
	Click to exit from the software
	Click to save/export items of the user mailbox
	Click to stop the saving/scanning process

Customize User Interface

You can add or remove toolbar buttons by clicking:



→ **Add or Remove Buttons** → **Standard** in the toolbar and selecting appropriate buttons.

1.3.2 Kernel for Novell GroupWise to Exchange Migration File Creator

Kernel for Novell GroupWise to Exchange Migration File Creator creates a .NUCON batch file that lists and records details of unlimited GroupWise user mailboxes for conversion to PST or MS Exchange Server. Batch file eliminates the pain of converting GroupWise User Mailboxes one by one. Creation of batch file saves the valuable time of administrators/technicians.

Kernel for Novell GroupWise to Exchange Migration File Creator has the feature of importing MS Excel worksheet that is used to store complete information about the Novell GroupWise user mailboxes.

1.3.2.1 Graphical User Interface

As the batch file creation tool - Kernel for Novell GroupWise to Exchange Migration File Creator has been installed automatically on your computer system with the installation of Kernel for Novell GroupWise to Exchange software; you can start creating batch file to perform multiple mailboxes migration after getting acquainted with the software interface of batch file creator tool.

Menu Bar

The menu-bar of Kernel for Novell GroupWise to Exchange Migration File Creator comprises four main menus – File, Edit, View, and Help.

File Menu

The **File** menu comprises six menu items.

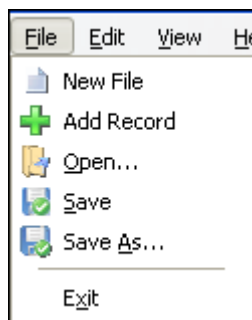


Figure 1.5: File Menu of File Creator

Menu items in the **File** menu:

Field Name	Field Description
New File	Select to remove all existing records listed in the Kernel for Novell GroupWise to Exchange Migration File Creator software and create new record for a new batch file
Add Record	Select to add new record of the user mailbox in a batch file
Open	Select to open an existing .NUCON batch file
Save	Select to save the .NUCON batch file
Save As	Select to select the location on your hard drive to save the .NUCON batch file
Exit	Select to exit from the software

Edit Menu

The **Edit** menu comprise of single menu item:



Figure 1.6: Edit Menu of File Creator

Menu items in the **Edit** menu:

Field Name	Field Description
Remove	Select to remove the selected record from the list

View Menu

The **View** menu comprises two menu items.

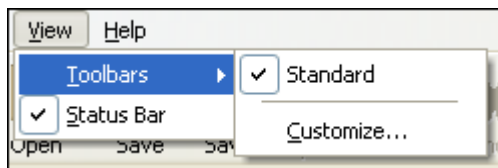


Figure 1.7: View Menu of File Creator

Menu items in the **View** menu:

Field Name	Field Description
Toolbars	Select to view or hide toolbar of Kernel for Novell GroupWise to Exchange Migration File Creator software
Status Bar	Select to view or hide status Bar of Kernel for Novell GroupWise to Exchange Migration File Creator software

Help Menu

The **Help** menu comprises three menu items.

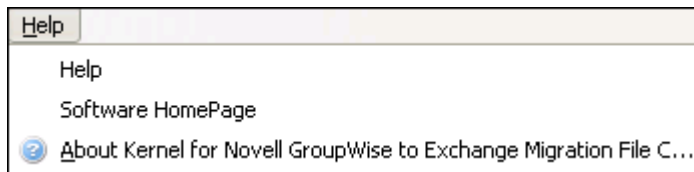




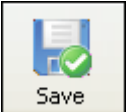

Figure 1.8: Help Menu of File Creator

Menu items in the **Help** menu:

Field Name	Field Description
Help	Select to view help information pertaining to performing various tasks using Kernel for Novell GroupWise to Exchange Migration File Creator
Software Homepage	Select to visit homepage of our website
About Kernel for Novell GroupWise to Exchange Migration File Creator	Select to view version-related and support information of Kernel for Novell GroupWise to Exchange Migration File Creator

Tool Bar

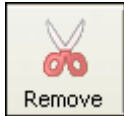
Following are the tool bar buttons used in the Kernel for Novell GroupWise to Exchange Migration File Creator:

Button	Button Name	Button Description
	New	Select to remove all existing records listed in the Kernel for Novell GroupWise to Exchange Migration File Creator software and create new record for a new Kernel batch file
	Open	Select to open the existing .NUCON file
	Save	Select to save the .NUCON batch file
	Save As	Select to define the location on your hard drive to save the .NUCON batch file



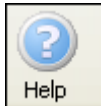
Add Record

Select to add the records/details of the GroupWise user mailbox and saving options



Remove

Select to remove the selected record from the list



Help

Select to view User's Help Manual of Kernel for Novell GroupWise to Exchange Migration File Creator software



Import Excel

Select to import excel worksheet with added information about the batch of GroupWise mailbox(s) to be migrated

Status Bar

Status bar is displayed at the bottom of the software window. The text 'Ready' is displayed on the status bar if Kernel for Novell GroupWise to Exchange Migration File Creator is ready to be used. Status bar also displays the text 'CAP', 'NUM', 'SCRL' which respectively correspond to the Caps Lock, Num Lock, and Scroll Lock keys on your keyboard. If any of these keys are pressed, the color of the corresponding text will turn blue/black.

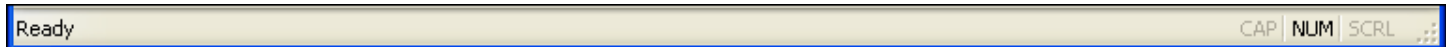


Figure 1.9: Status Bar of File Creator

Customize User Interface

You can add or remove toolbar buttons by clicking:



→ **Add or Remove Buttons** → **Standard** in the toolbar and selecting appropriate buttons.

2. Getting Started

Now that you have understood the features and potential of Kernel for Novell GroupWise to Exchange, you are ready to get hands on experience of the software. To start migrating files, you will first need to download and install this software. However it is strongly recommended that before installing Kernel for Novell GroupWise to Exchange, you should go through the installation pre-requisites for the software to ensure that your computer is appropriately configured to run the software.


2.1 Installation Pre-requisites and System Requirements

The various pre-requisites for installing and running Kernel for Novell GroupWise to Exchange can be broadly classified into two major categories – Hardware requirements and Software requirements.

2.1.1 Hardware Requirements:

The hardware requirements for installing the software are as follows:

- Pentium Class Processor
- Minimum 64MB RAM (128 MB recommended)
- 10MB for Software installation
- Disk Space - Enough space to save the results

 You should have at-least 10 MB of free disk space if you want to export and save 10 MB .PST file.

2.1.2 Software Requirements:

The software requirements for installing the software are as follows:

2.1.2.1 Operating System Requirements

Supported operating systems:

- Windows Vista
- Windows XP
- Windows 2003
- Windows 2000

2.1.2.2 Novell GroupWise Server Requirements

Supported Novell GroupWise Server versions:



- Version 6, 6.5, 7

2.1.2.3 MS Outlook Requirements

Supported MS Outlook versions:

- MS Outlook 97 and above (97, 98, 2000, 2003, 2007)

2.1.2.4 MS Exchange Server Requirements

Supported MS Exchange Server versions:

- All versions of MS Exchange Server

2.1.2.5 MS Excel Requirements

Supported MS Excel versions:


- MS Excel 97, 98, 2000, 2002, 2003 and 2007

2.2 Downloading Kernel for Novell GroupWise to Exchange software for the First Time

After checking your computer with the prescribed system requirements for Kernel for Novell GroupWise to Exchange, you can download and install the software on your computer. You can buy the full version of the software from any one of our authorized resellers– Element5, Asknet and 2CO.

If you want to try using Kernel for Novell GroupWise to Exchange before buying it, you can download the evaluation version from the following link:

<http://www.nucleustechologies.com/download-groupwise-to-exchange.php>

 You can export unlimited GroupWise files saved on your system by using the evaluation version of Kernel for Novell GroupWise to Exchange; however, the evaluation version lets you save 10 emails per folder of the converted GroupWise mailbox.

2.3 Installing Kernel for Novell GroupWise to Exchange


After downloading the installer file for Kernel for Novell GroupWise to Exchange, you can install the software by running the file.

To install Kernel for Novell GroupWise to Exchange:

1. Double-click the Kernel for Novell GroupWise to Exchange installer. Follow the on-screen instructions.

The **Setup Installation Complete** screen will be displayed.

2. Click **Finish** to launch the software.

 When you run the Kernel software setup, two programs gets installed in the All Programs menu and two desktop icons are created: Kernel for Novell GroupWise to Exchange.exe and Kernel for Novell GroupWise to Exchange - Batch Migration File Creator.exe


2.4 Un-installing Kernel for Novell GroupWise to Exchange

You may need to uninstall and re-install Kernel for Novell GroupWise to Exchange. To uninstall Kernel for Novell GroupWise to Exchange:

1. Click the **Start → All Programs → Kernel for Novell GroupWise to Exchange → Uninstall Kernel for Novell GroupWise to Exchange**

A warning message will be displayed.

2. Click '**Yes**' to uninstall Kernel for Novell GroupWise to Exchange.

 Before proceeding to uninstall Kernel for Novell GroupWise to Exchange, you must ensure that the software is not running.

You can alternatively uninstall Kernel for Novell GroupWise to Exchange from the **Control Panel** by performing the following steps:

1. Click the **Start Menu → Control Panel** and then double click the **Add or Remove Programs** icon.
2. Select **Kernel for Novell GroupWise to Exchange** and click **Remove**.

A warning message will be displayed.

3. Click '**Yes**' to uninstall Kernel for Novell GroupWise to Exchange.

3. Migration from Novell GroupWise to Exchange Server

Now that you have complete familiarity of the user interface of Kernel for Novell GroupWise to Exchange, you are ready to perform the migration of GroupWise mailbox(s).

3.1 Single Mailbox Migration

1. Launch Kernel for Novell GroupWise to Exchange software.

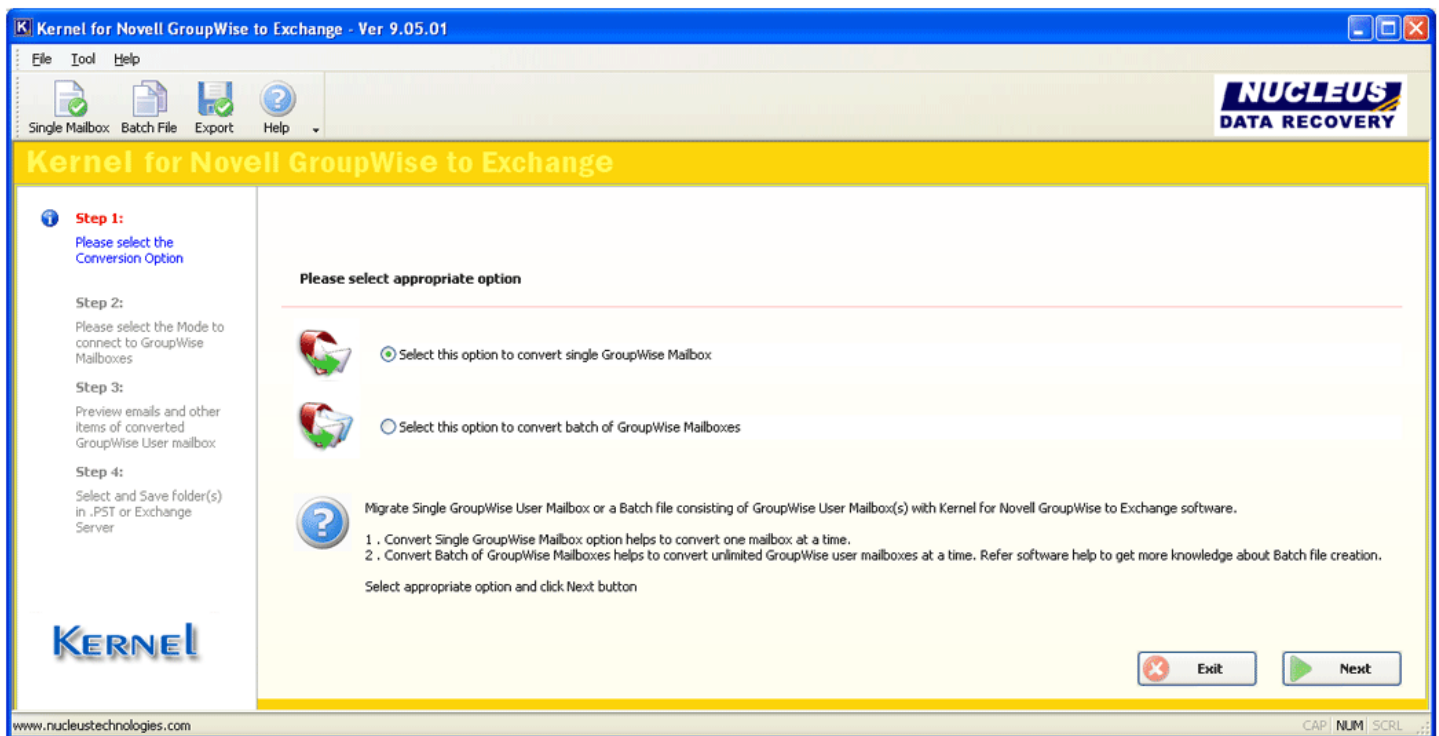


Figure 3.1: Main window of Kernel for GroupWise to Exchange

2. Select the radio button 'Select this option to convert single GroupWise Mailbox' and click Next button.

On clicking 'Next', window displays three modes to connect to the mailboxes of Novell GroupWise and archive selection option: **Default Mode, Login Mode and Command Line mode.**

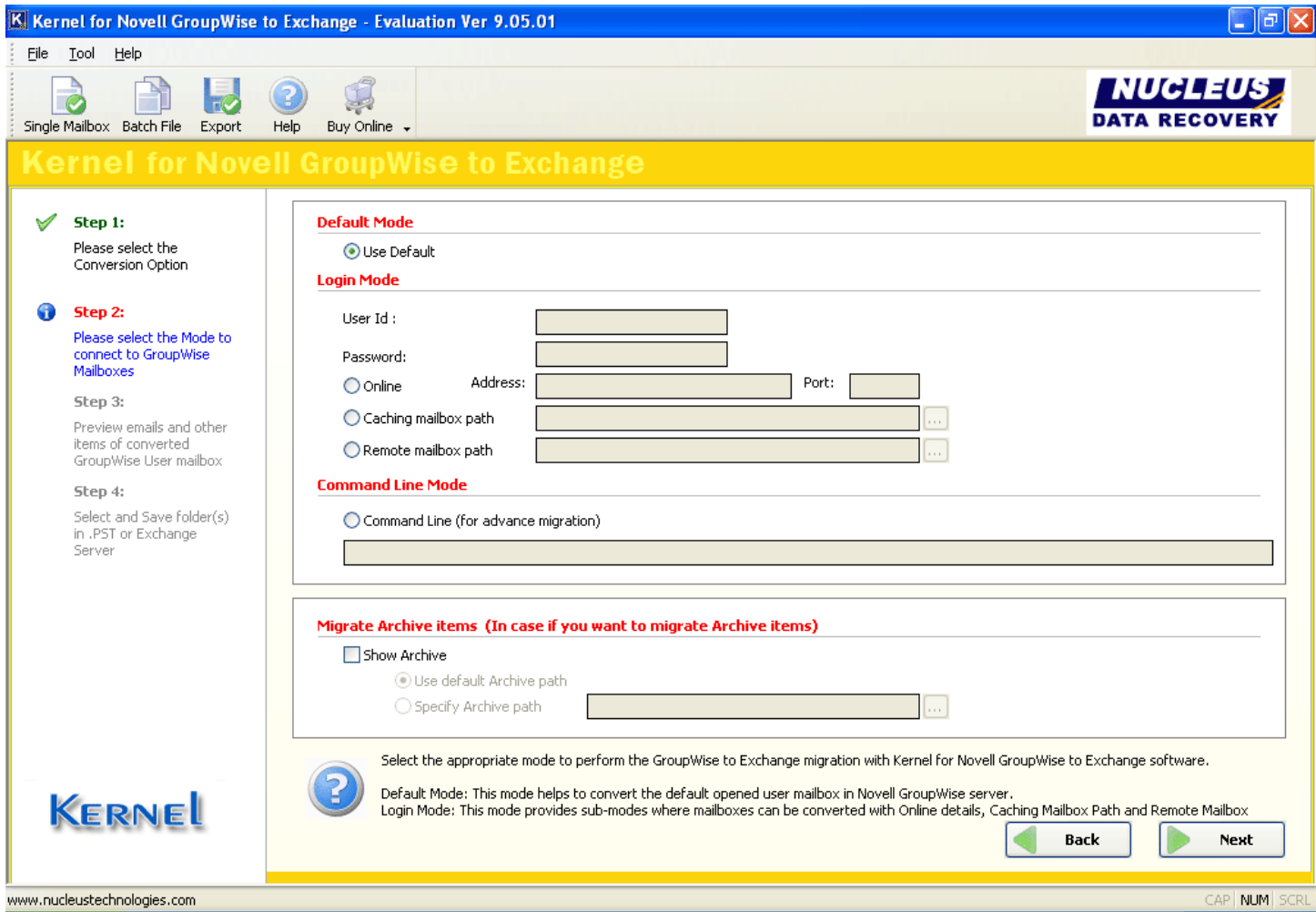


Figure 3.2: Window showing three modes

3. Choose any of the modes as per the requirement and perform migration of Single GroupWise mailbox.
 - **Default mode:** This mode converts the items of currently opened mailbox in GroupWise Client.
 - **Login Mode:** This mode provides sub-modes, where mailboxes can be connected and converted with Online details, Caching Mailbox Path and Remote Mailbox path of the mailbox file.
 - **Command Line Mode:** This mode helps to access and convert GroupWise mailbox without accessing or opening the GroupWise Client. Items of the mailbox are easy to convert by typing complete mailbox path: */pr-/"mailbox destination location"*

3.1.1 Default Mode

Default mode migrates the currently opened user mailbox in Novell GroupWise client.

1. Select the "Use Default" option to connect to the GroupWise mailbox in Default mode.

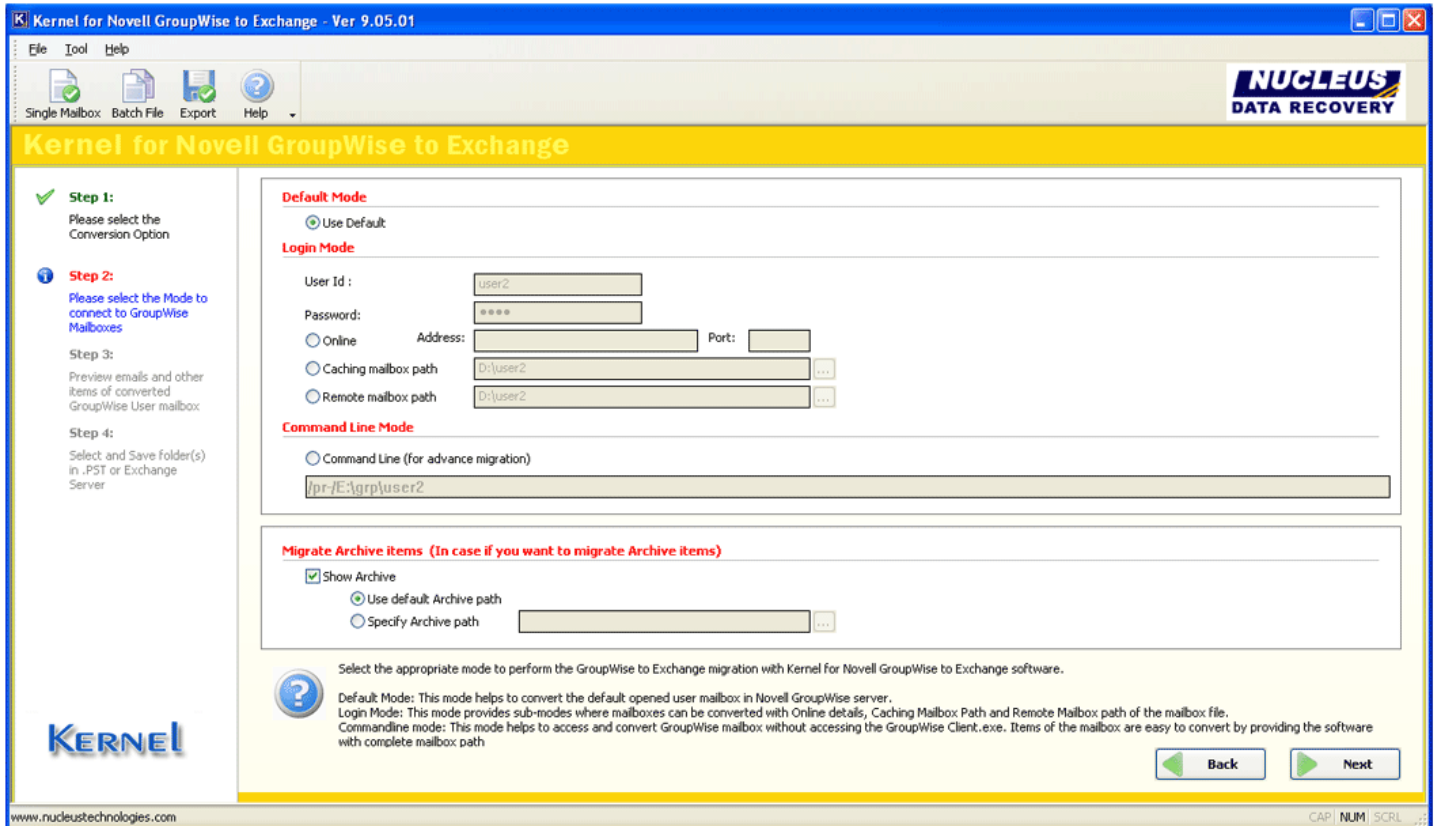



Figure 3.3: Using Default Mode

 This option is enabled by default in the software.

2. Activate and select the Archive file options to migrate archived emails. Click **Next** button to continue. Software shows all the existing folders in a tree like structure.
3. Select any of the tabs to view the preview of selected email either in Text or HTML format.

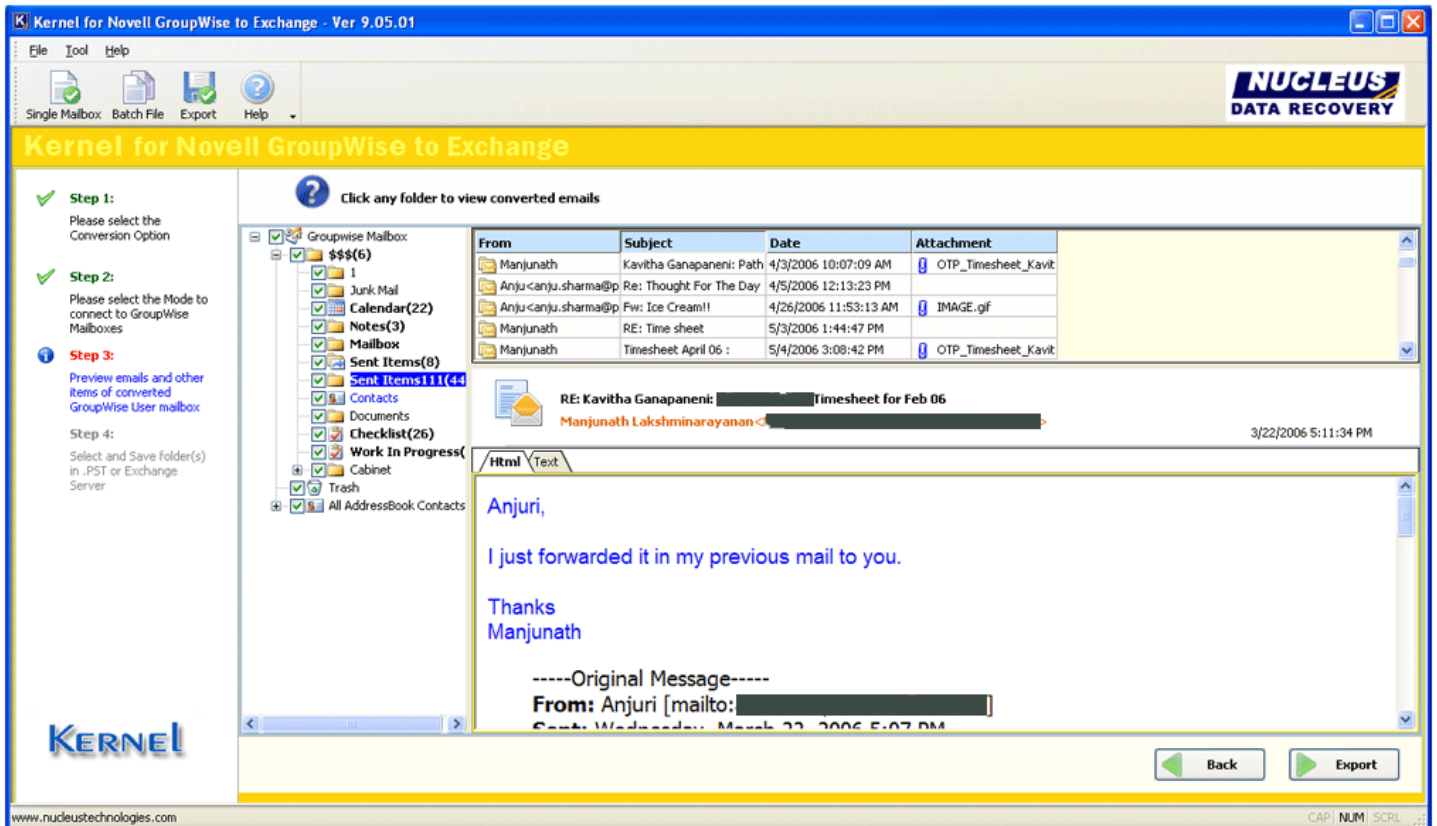


Figure 3.4: Preview Window

Emails, calendar, contacts and other items will be displayed in the left pane of the window. Right pane of the window displays the respective items of the folder selected from the left pane. Bottom pane displays the preview of the item selected from the right pane of the window.

4. Click **Export** button to continue.

Software asks for the Save Options whether to Save in PST or Save in Exchange Server.

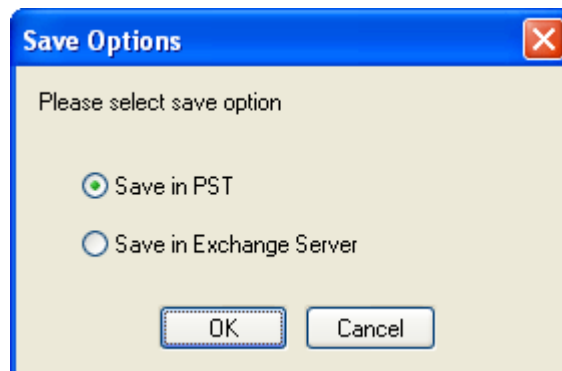


Figure 3.5: Save Options

5. Select the appropriate radio button and click **OK** button.

3.1.1.1 Saving with PST

To save the GroupWise mailbox items in PST:

1. Select the "**Save in PST**" radio button and click **OK**.

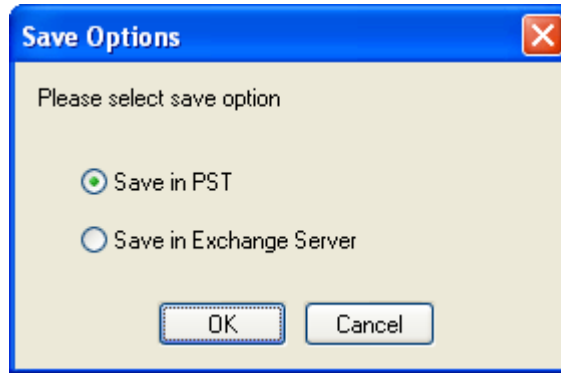


Figure 3.6: Saving with PST

2. Define PST Folder Path and PST File Name and click **OK**.

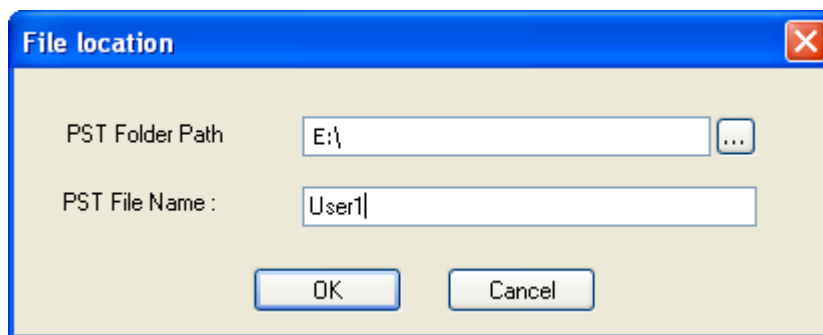


Figure 3.7: Window asking for PST File location

Software starts saving selected folders at the selected location.

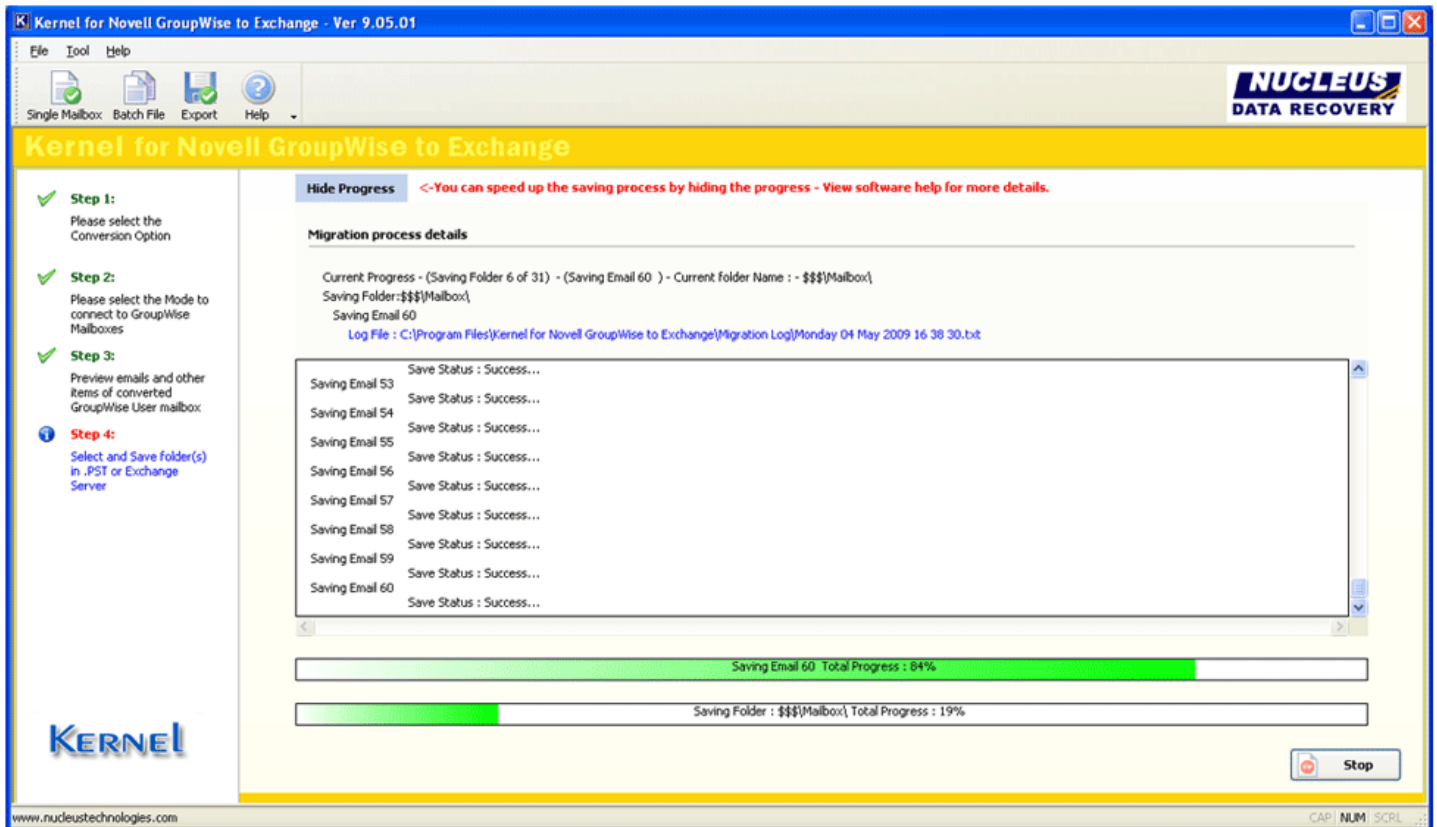


Figure 3.8: Saving Process

Emails and other items of the user mailbox are saved in new PST file with original folder structure of the Novell GroupWise mailbox.

3.1.1.2 Saving with Exchange Server

To save the GroupWise mailbox items in Exchange Server:

1. Select the "**Save in Exchange server**" radio button and click **OK**.
2. Provide the details for Microsoft Exchange Server, User Name, Password, and Domain Name and then click **OK**.

Exchange Server information ✖

Type the name of Exchange Server computer

Microsoft Exchange Server : *

Type the name of mailbox set up by your administrator. The mailbox name is usually your user name.

User Name: *

Type the password of mailbox set up by your administrator.

Password: *

Type the Domain Name from which mailbox belongs

Domain Name: *

Figure 3.9: Exchange Server Information

Software starts saving the mailbox items in MS Exchange Server user profile.

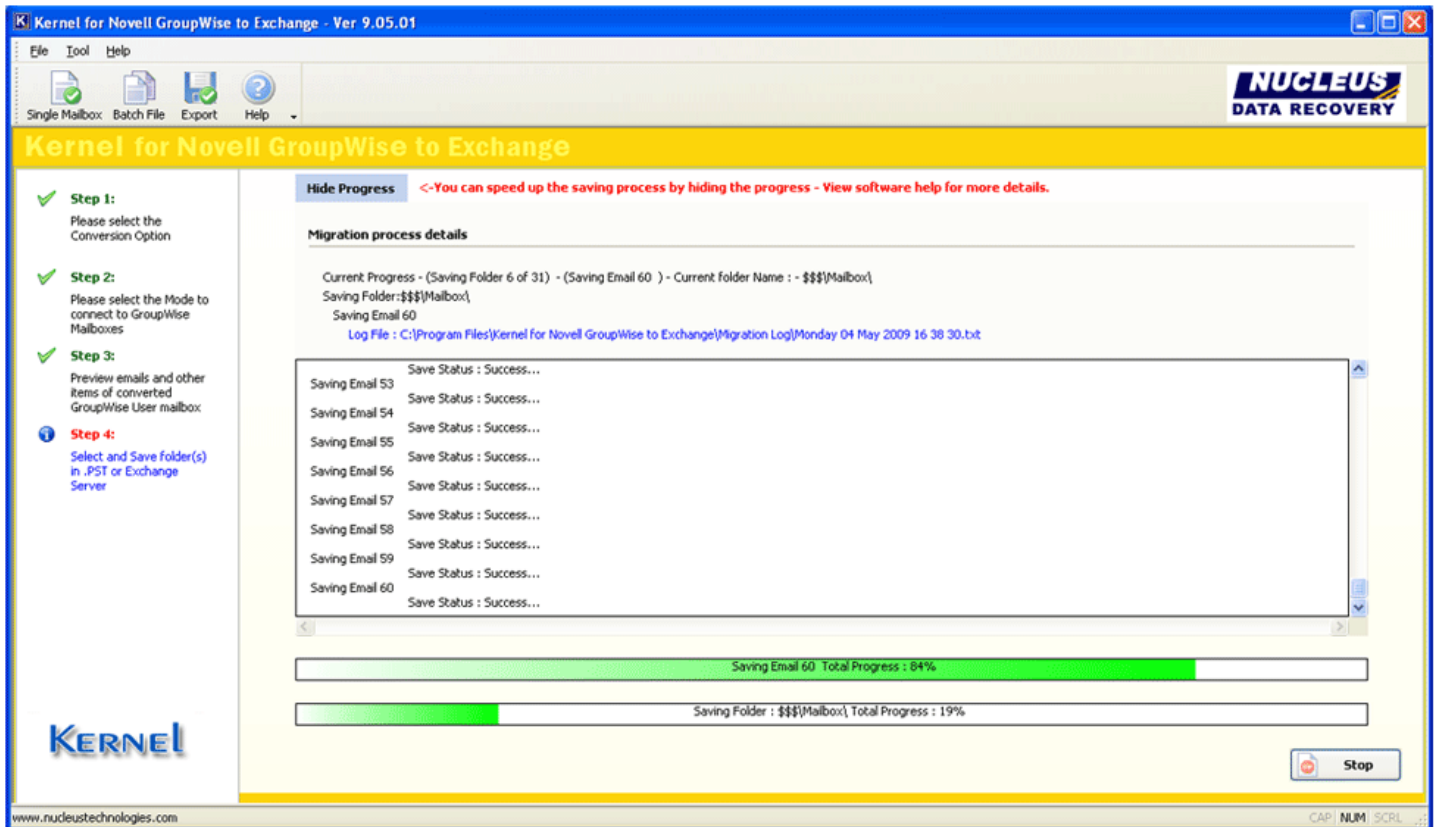


Figure 3.10: Saving in progress

Emails and other items of the user mailbox are now saved.

3.1.2 Login Mode

Login mode provides three sub modes: Online, Caching and Remote.

Online Mode

1. Select the **Online** radio button to access the GroupWise mailbox in online mode.
2. Type the User Id and Password of the mailbox which you want to migrate from Novell GroupWise to Exchange.
3. Type the IP address and Port number of the computer where Novell GroupWise Server is installed.

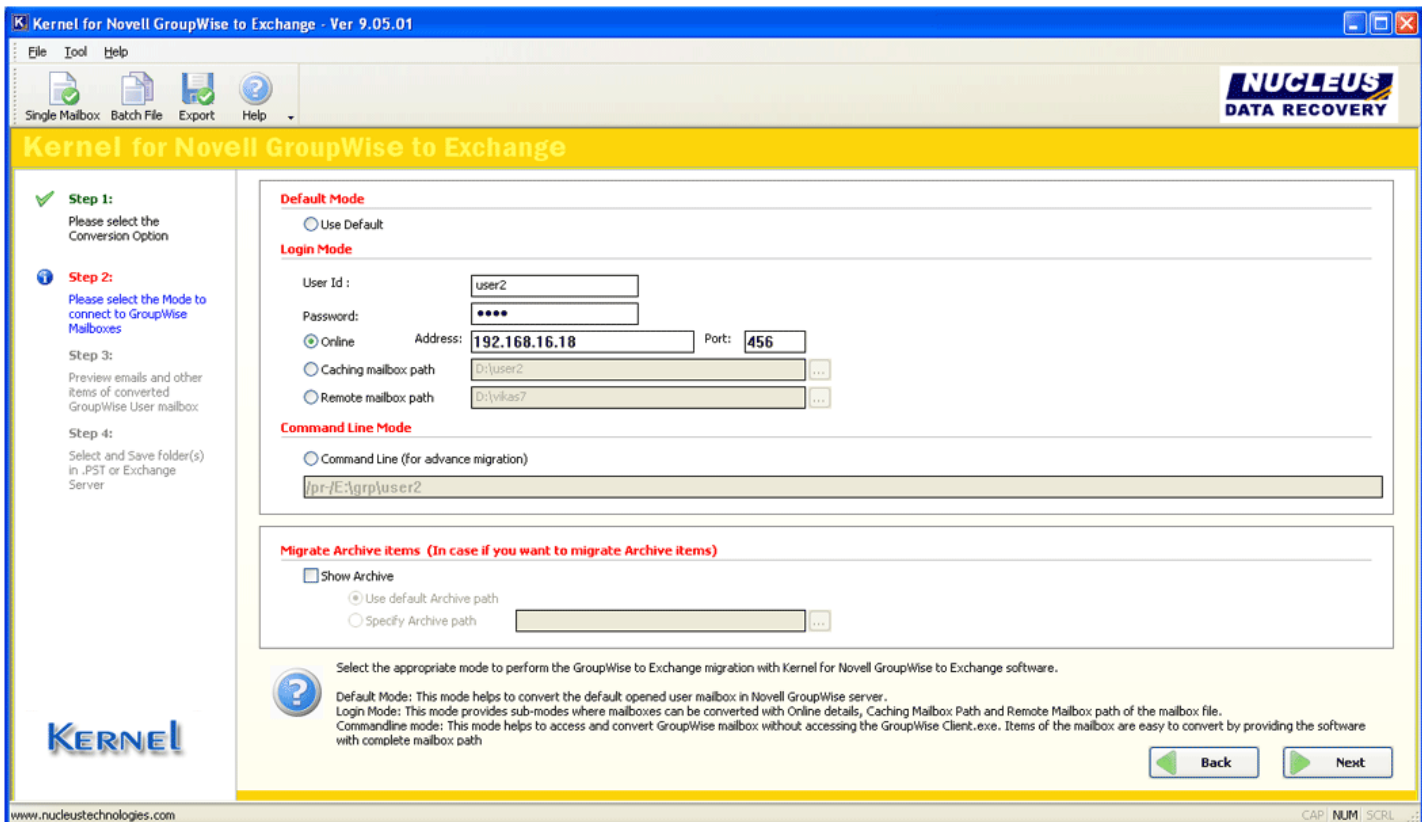


Figure 3.11: Using Online Mode

4. Click **Next** button to proceed.

Select any of the GroupWise mailbox items to view its contents.

5. Click **Export** button to save the mails.

Software asks for the Save Options whether to Save in PST or Save in Exchange Server.

6. Select the appropriate radio button and click **OK** button.

The saving process is same as described in Section 3.1.1.1 and 3.1.1.2.

Caching Mode

1. Select the **Caching mailbox path** radio button to access the GroupWise mailbox in cache mode.

2. Type the User Id and Password of the mailbox which you want to migrate from Novell GroupWise to Exchange. Also define the caching mailbox path with the ... button.

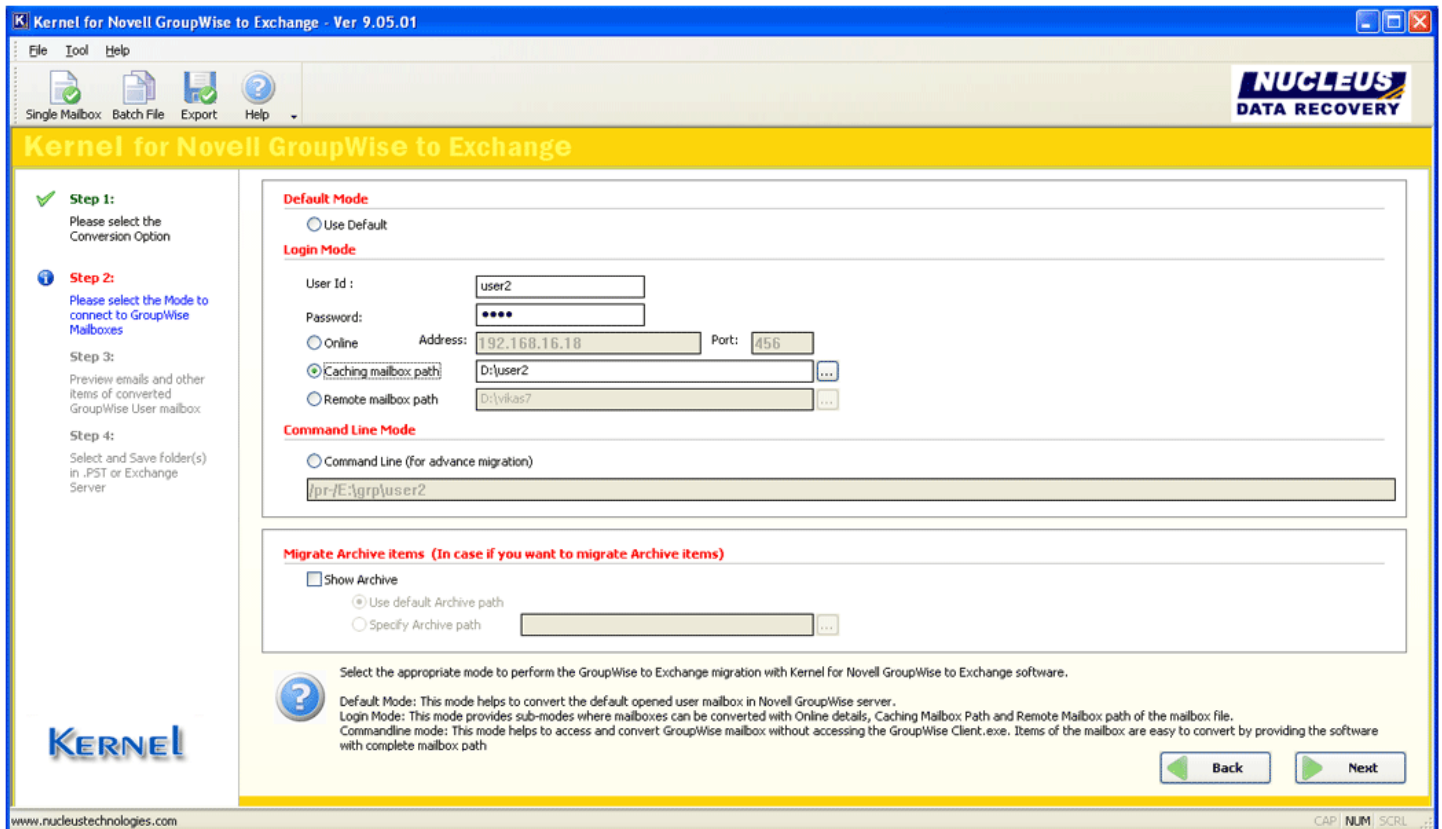


Figure 3.12: Using Caching Mode

3. Click **Next** button to proceed.
4. Further steps are same as step 5 and 6 of above mentioned **Online Mode**.

Remote Mode

1. Select the "**Remote mailbox path**" radio button to access the GroupWise mailbox in remote mode.
2. Type the password of the mailbox which you want to migrate and define the remote mailbox path through the ... button.

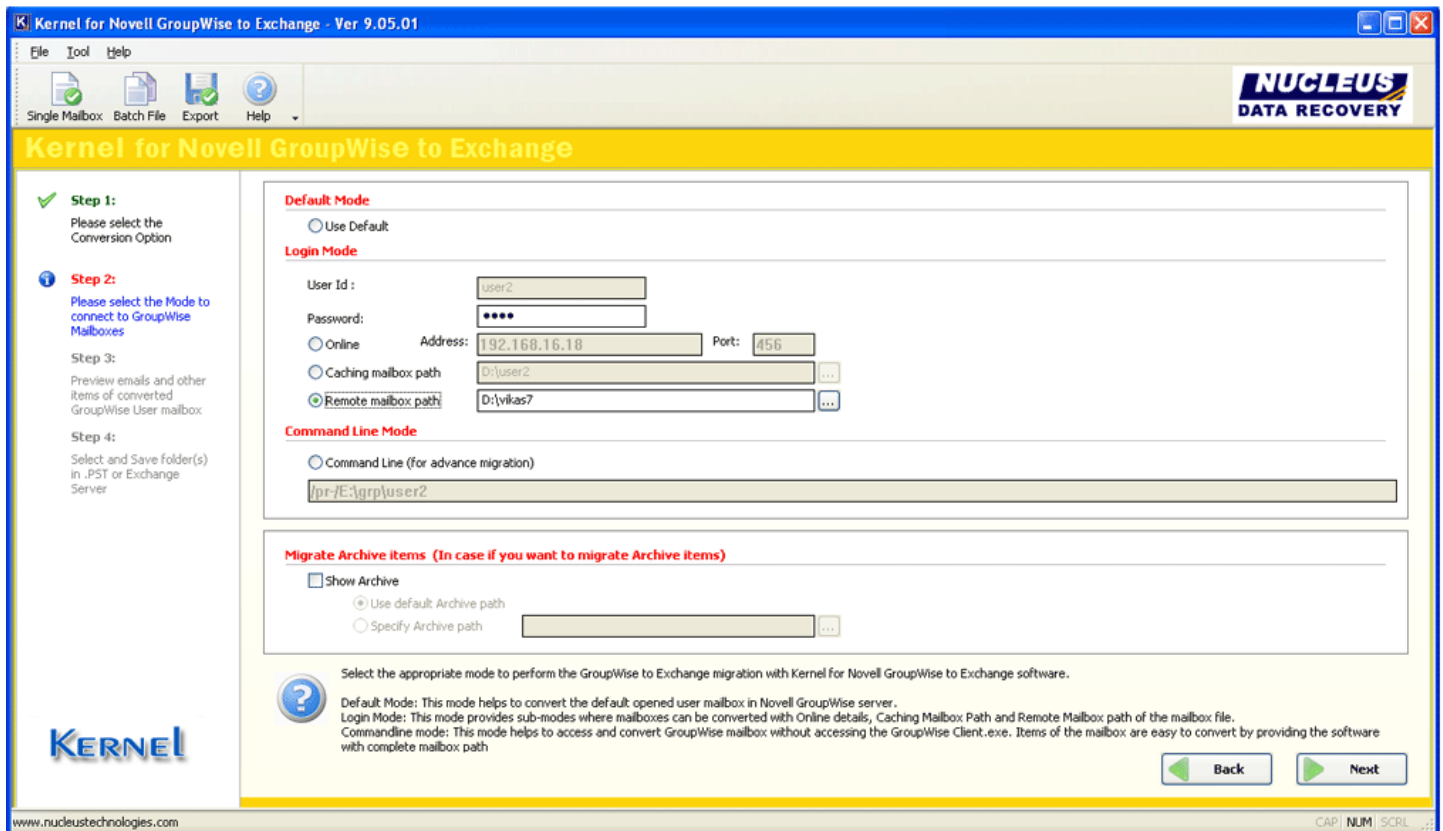



Figure 3.13: Using Remote Mode

 Password is required for only those mailboxes which are password protected, otherwise there is no need to provide password for authentication.

3. Rest steps are same as step 5 and 6 of above mentioned **Online Mode**.

3.1.3 Command Line Mode

Command Line mode helps you to access the GroupWise mailbox without opening or accessing the Novell GroupWise.exe and user mailbox account. If you know the path where GroupWise mailbox is saved, then type the path in Command Line mode and access that user mailbox for migration.

1. Select **Command Line (for advance migration)** radio button to perform the migration with Command Line Mode.
2. Type the User ID, Password and the User GroupWise Mailbox path.

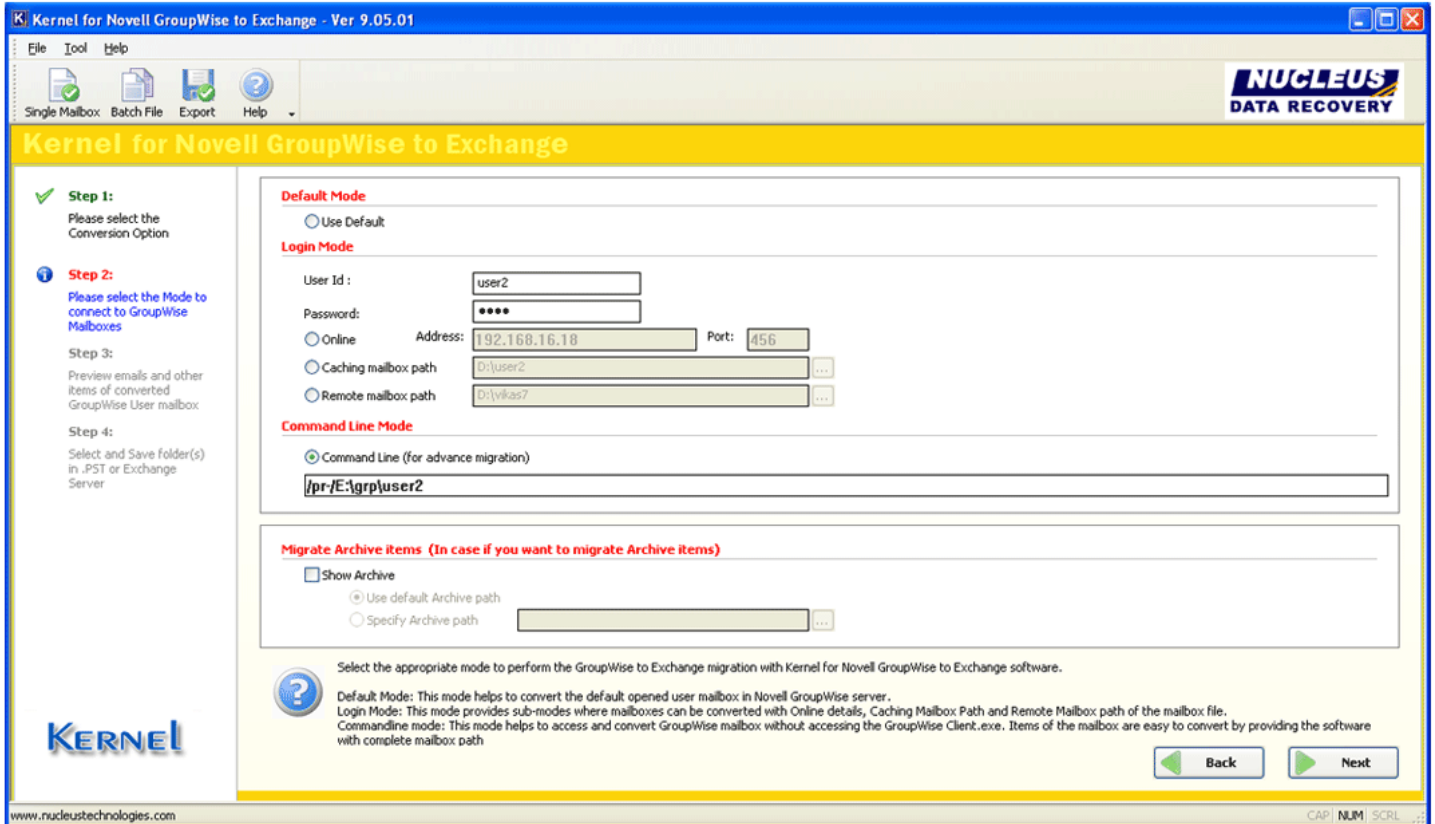


Figure 3.14: Using Command Line Mode

Remote Novell GroupWise mailbox can be accessed with the switch and the complete path of the mailbox which is required to be migrated.

3. Click **Export** button from the toolbar or simply click **Next** button to continue.
4. Rest steps are same as steps 5 and 6 of above mentioned **Online Mode**.

3.2 Multiple Mailbox Migration

Multiple Mailbox Migration lets you migrate unlimited GroupWise files at once. Batch file is one medium with which you can easily list and convert unlimited GroupWise user mailboxes at once. Batch file stores records of unlimited GroupWise user mailbox accounts. Creation of batch file eases the task of defining saving location and saving mode for the converted mailboxes in PST or Exchange Server.

3.2.1 Creating .NUCON Batch file

1. Launch Kernel for Novell GroupWise to Exchange Migration File Creator software.

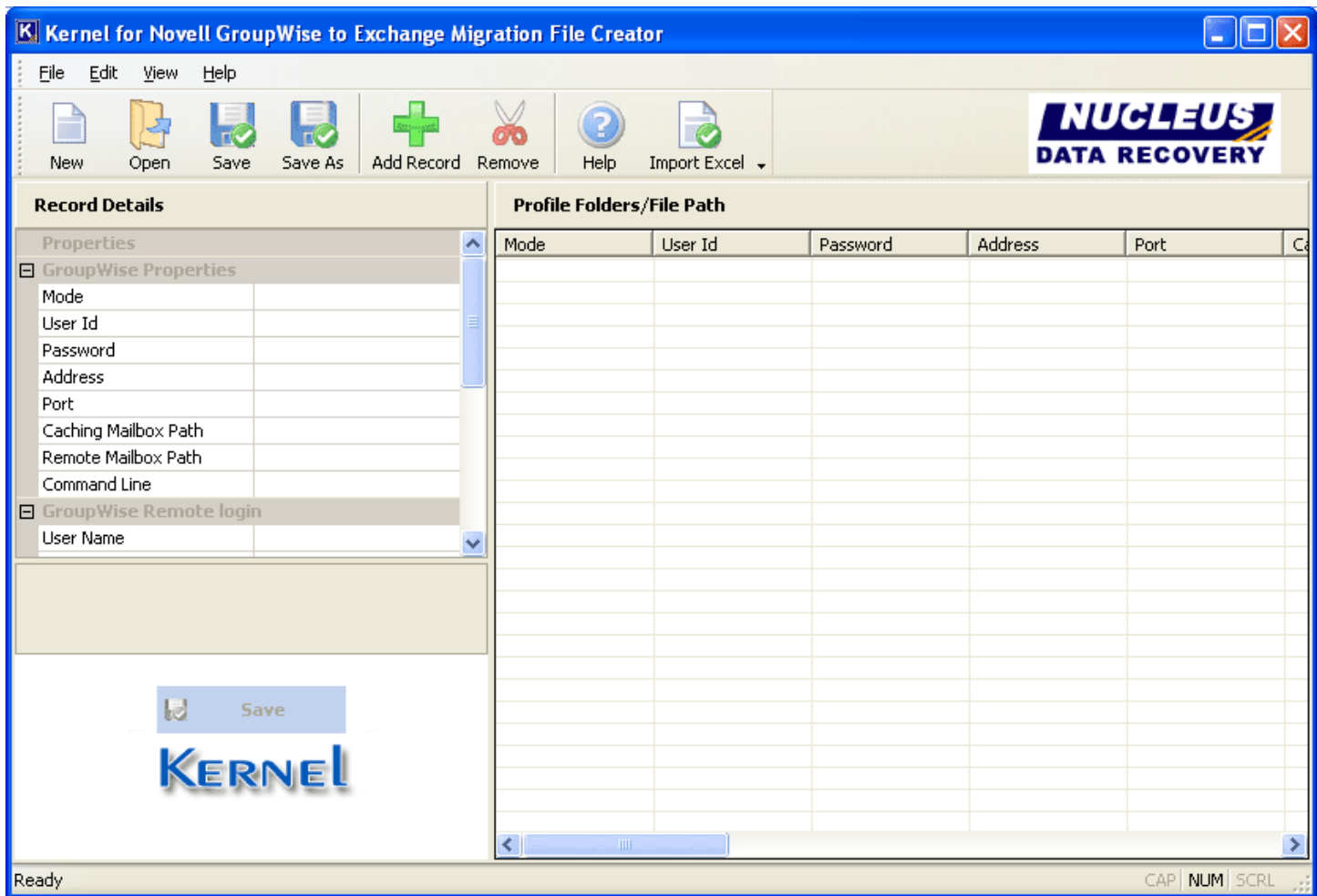


Figure 3.15: Main window of File Creator software

2. Select '**Add Record**' option from the File menu or click the '**Add Record**' button from the tool bar.
3. Provide the various related information, as in, user id, password, online, caching mailbox details, etc.

GroupWise Information

Please add all GroupWise related information

GroupWise Login Details

User Id

Password

Online Address Port

Caching Mailbox Path ...

Remote Mailbox Path ...

Command Line (for advance migration)

Archive Details

Migrate Archive items

Use default Archive path

Specify Path ...

Advance Options

This option is used in case if software is not able to access Remote Mailbox Path or Caching Mailbox Path

Note :
The user name should be followed by domain name
Example: domain\username


User Name

Password

Computer Name/Ip:

< Back Next > Cancel

Figure 3.16: GroupWise Information

 Select any of the modes (Online, Caching, Remote, and Command Line) to get access to the GroupWise user mailbox.

4. After filling up all the relevant information, click **Next** button.

As you click **Next**, Kernel for Novell GroupWise to Exchange Migration File Creator software provides saving options: **Save in PST** and **Save in Exchange Server** to choose from it.

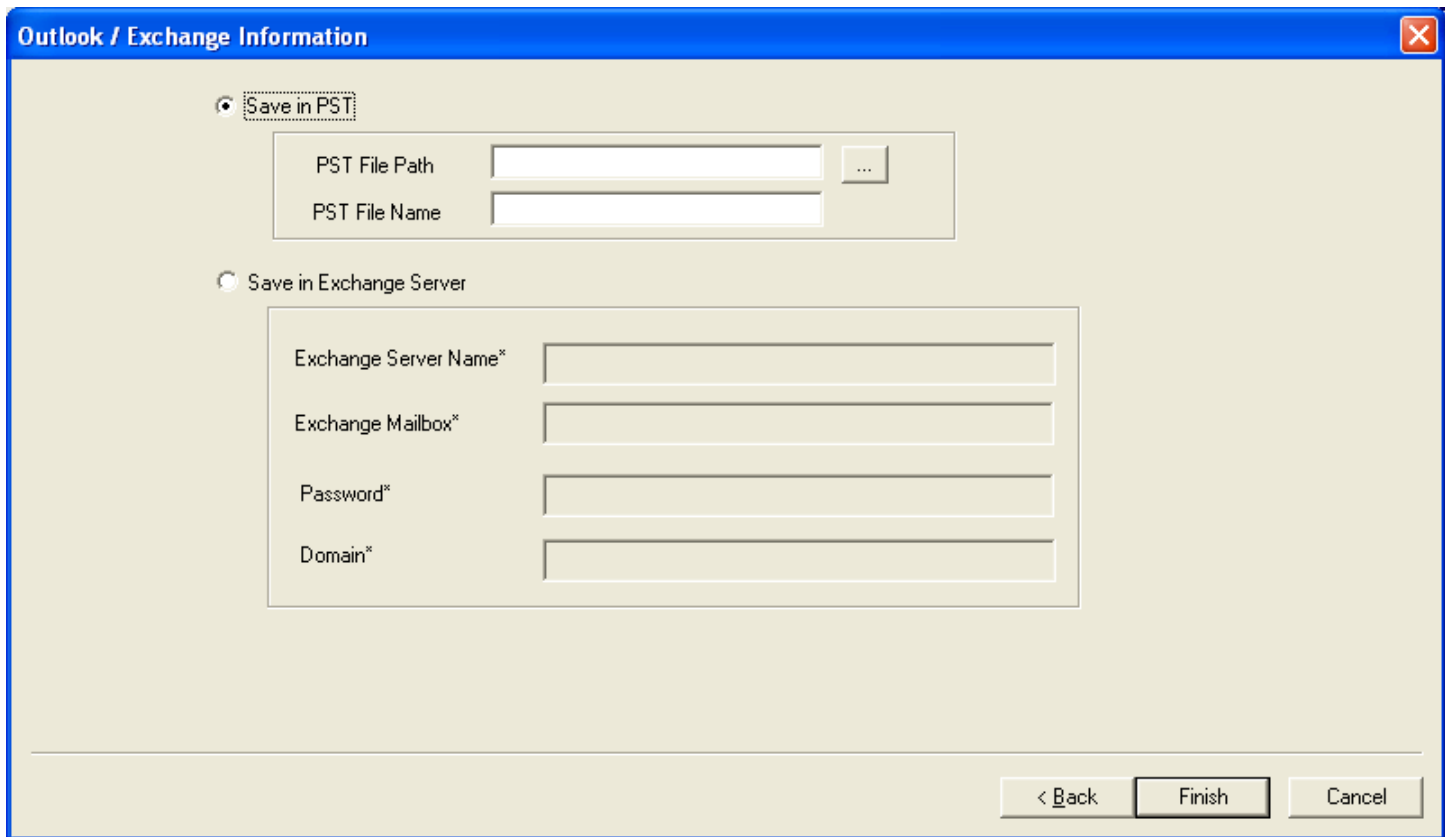


Figure 3.17: Outlook/Exchange Information

5. Select any of the saving option and provide the details accordingly.

Outlook / Exchange Information

Save in PST

PST File Path ...

PST File Name

Save in Exchange Server

Exchange Server Name*

Exchange Mailbox*

Password*

Domain*

< Back Finish Cancel

Figure 3.18: Information for Exchange Server

6. Click **Finish** button to continue.

All the created records of the GroupWise User Mailboxes get listed in the software.

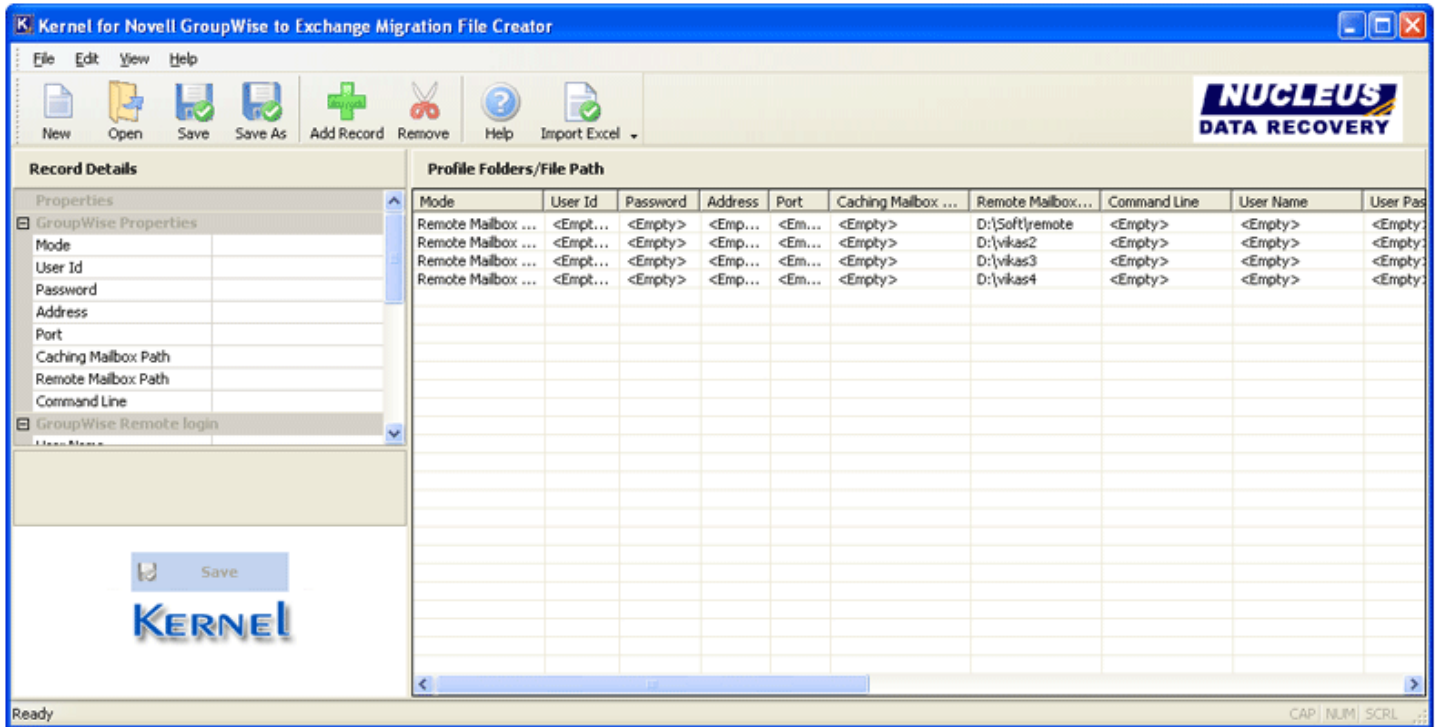


Figure 3.19: Created Records

7. Click the **Save** button from the tool bar to save the batch file or click the **Save As** button to select and define saving location for the batch file on your computer system.

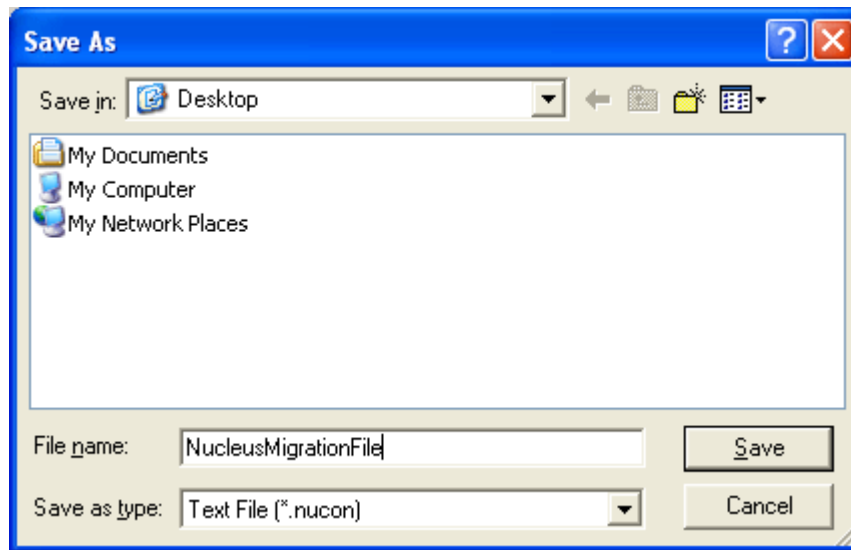


Figure 3.20: Saving .NUCON file

Kernel for Novell GroupWise to Exchange Migration File Creator software by default creates *.NUCON file extension for the created batch file for multiple mailbox conversion.

3.2.2 Creating Excel Database

Excel datasheet is another way of performing multiple mailbox migration. Information regarding various Novell GroupWise user mailboxes is easily saved to an excel worksheet according to the provided file format. Save details in .XLS file and export it to Kernel for Novell GroupWise to Exchange Migration File Creator software to get it saved to .NUCON batch file.

Excel sheet (.XLS) to be imported should be in the following format.

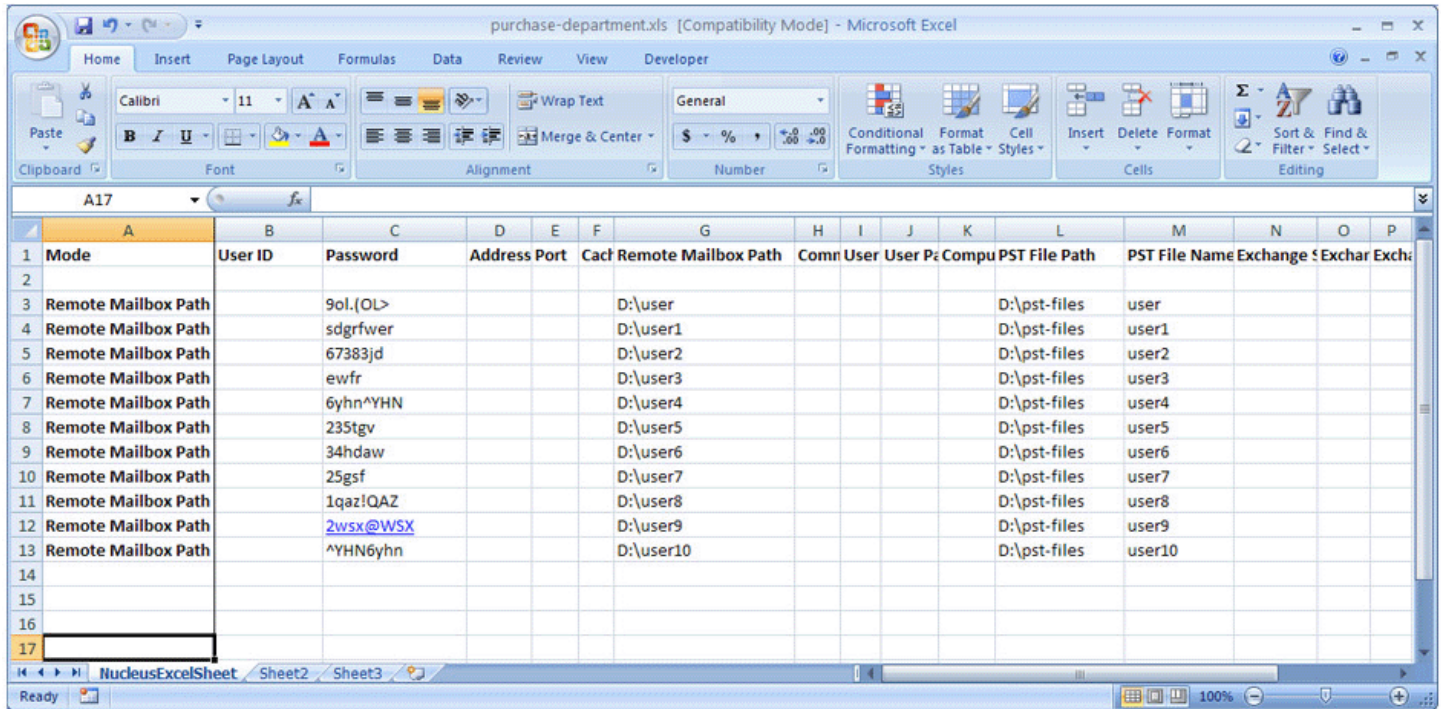


Figure 3.24: Excel sheet format

1. Tab name of the sheet should be **NucleusExcelSheet**.
2. Sheet should consist of 19 columns.

Field 1	Mode
Field 2	User ID
Field 3	Password
Field 4	Address
Field 5	Port
Field 6	Caching Mailbox Path

Field 7	Remote Mailbox Path
Field 8	Command Line
Field 9	User Name
Field 10	User Password
Field 11	Computer Name/IP
Field 12	PST File Path
Field 13	PST File Name
Field 14	Exchange Server Name
Field 15	Exchange Mailbox
Field 16	Exchange Server Password
Field 17	Domain
Field 18	Save Archive
Field 19	Archive Path

3. Fill up the fields according to the login type selected amongst

- **Online**

Following are the mandatory fields to be filled in while using this mode:


- I. User ID: Type the user name of the mailbox.
- II. Password: Type the password of user mailbox.
- III. Address: Type the IP address of the Novell GroupWise Server
- IV. Port: Type the Port Number of the Novell GroupWise Server.
- V. Archive Details: Always type "NO" in this field if you want to migrate the mailbox items only.
- VI. Save in PST: There are two fields in this option:
 - PST File Path
 - PST File Name

If you want to save the migrated items in PST file then type the PST path location in both the fields, otherwise it will be an error.

VII. Save in Exchange Server: There are four fields in this option:

- Exchange Server Name
- Exchange Mailbox
- Password
- Domain

If you want to save the migrated items to the user mailbox on MS Exchange Server, then all the four fields are compulsory, otherwise it would be an error.

 **NOTE:** Only one amongst “Save in PST” and “Save in Exchange Server” should be filled, otherwise software will display an error.

- **Caching Mailbox Path**

Following are the mandatory fields to be filled in while using this mode:


- I. User ID: Type the user name of the mailbox.
- II. Password: Type the password of user mailbox (if any).
- III. Caching Mailbox Path: Browse and list the path for Caching Mailbox of Novell GroupWise account to be migrated.
- IV. Archive Details: Always type "NO" in this field if you want to migrate the mailbox items only.
- V. Advance Options: Provide details to these fields if you are accessing the Caching mailbox from a network computer. This section will comprise of the login details of the computer in network. There are three fields in advanced options:
- VI. User Name of the network computer where mailbox is saved
- VII. Password of the network computer where mailbox is saved
- VIII. Computer Name/IP of the network computer where mailbox is saved
- IX. Advanced options fields are not compulsory, but recommended. If not filled, it will be shown as a warning.
- X. Save in PST: There are two fields in this option:
 - PST File Path
 - PST File Name

XI. If you want to save the migrated items in PST file then type the PST path location in both the fields, otherwise it will be an error.

XII. **Save in Exchange** Server: There are four fields in this option:

- Exchange Server Name
- Exchange Mailbox
- Password
- Domain

If you want to save the migrated items to the user mailbox on MS Exchange Server, then all the four fields are compulsory, otherwise it would be an error.

 **NOTE:** Only one amongst “Save in PST” and “Save in Exchange Server” should be filled, otherwise it will be an error.


- **Remote Mailbox Path**

Following are the mandatory fields to be filled in while using this mode:

- I. Password: Type the password of user mailbox (if any).
- II. Remote Mailbox Path: Browse and list the path of remote mailbox path of Novell GroupWise account to be migrated.
- III. Archive Details: Always type "NO" in this field if you want to migrate the mailbox items only.
- IV. Advance Options: Provide details to these fields if you are accessing the Remote mailbox from a network computer. This section will comprise of the login details of the computer in network. There are three fields in advanced options:
 - a. User Name of the network computer where mailbox is saved
 - b. Password of the network computer where mailbox is saved
 - c. Computer Name/IP of the network computer where mailbox is saved
- V. Save in PST: There are two fields in this option:
 - a. PST File Path
 - b. PST File Name
- VI. If you want to save the migrated items in PST file then type the PST path location in both the fields, otherwise it will be an error.
- VII. Save in Exchange Server: There are four fields in this option:

- a. Exchange Server Name
- b. Exchange Mailbox
- c. Password
- d. Domain


VIII. If you want to save the migrated items to the user mailbox on MS Exchange Server, then all the four fields are compulsory, otherwise it would be an error.

 **NOTE:** Only one amongst “Save in PST” and “Save in Exchange Server” should be filled, otherwise it will be an error.

- **Command Line (for advanced migration)**

Following are the mandatory fields to be filled in while using this mode:

- I. User ID: Type the user name of the mailbox.
- II. Password: Type the password of user mailbox.
- III. Command Line: This field is compulsory. If this field is left blank, error will be shown.
- IV. Archive Details: Always type "NO" in this field if you want to migrate the mailbox items only.
- V. Save in PST: There are two fields in this option:
 - PST File Path
 - PST File Name
- VI. If you want to save the migrated items in PST file then type the PST path location in both the fields, otherwise it will be an error.
- VII. Save in Exchange Server: There are four fields in this option:
 - Exchange Server Name
 - Exchange Mailbox
 - Password
 - Domain
- VIII. If you want to save the migrated items to the user mailbox on MS Exchange Server, then all the four fields are compulsory, otherwise it would be an error.

 **NOTE:** Only one amongst “Save in PST” and “Save in Exchange Server” should be filled, otherwise it will be an error.

3.2.3 Importing Excel Database

Once done with the creation of Excel (.XLS) sheet, you are ready to import the same to Kernel for Novell GroupWise to Exchange Migration File Creator and save it as .NUCON file. Follow the given steps:

1. Launch Kernel for Novell GroupWise to Exchange Migration File Creator software.

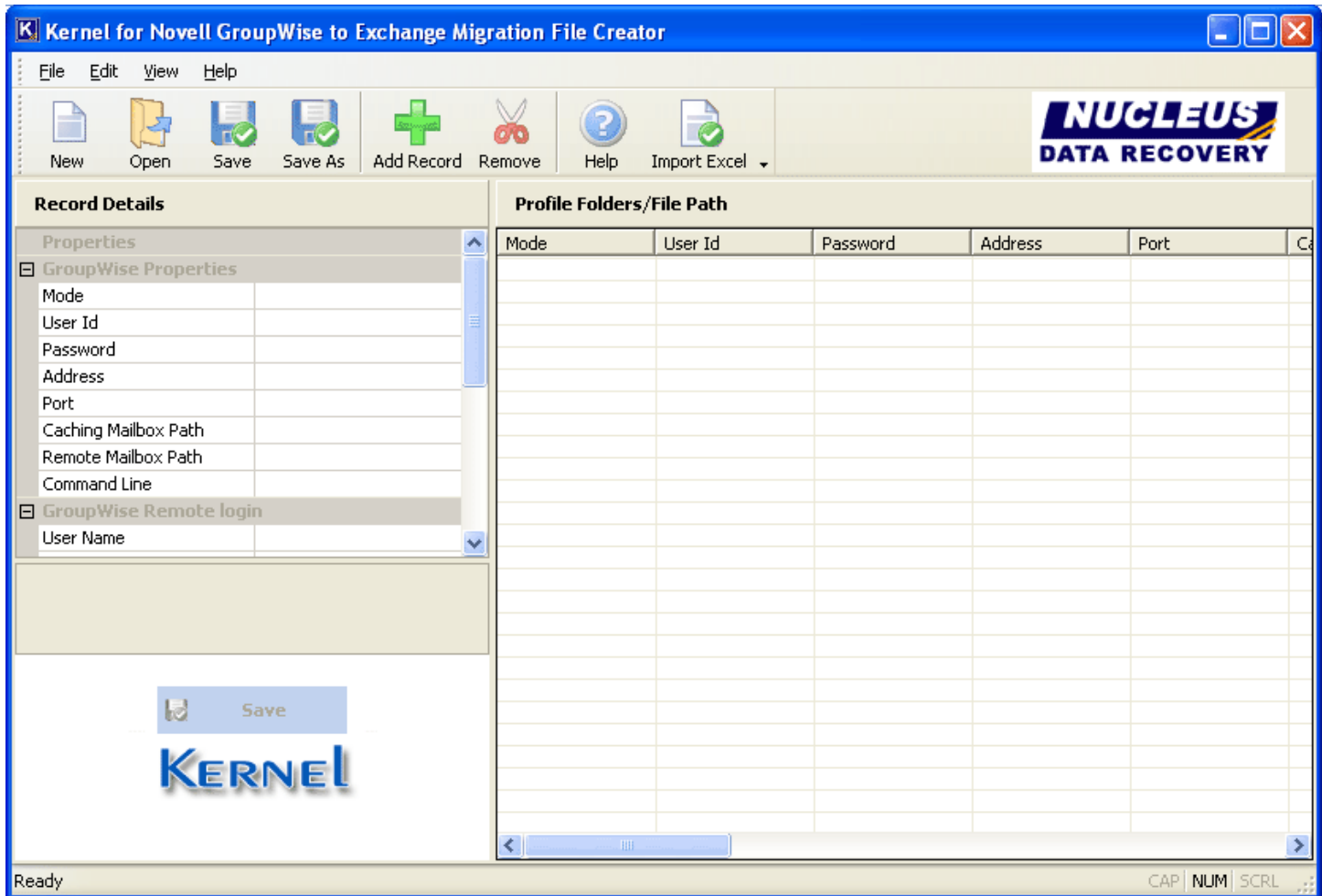


Figure 3.25: File Creator software

2. Click **Import Excel** button from the toolbar. Software displays the **Open** window to select the NucleusMigrationFile (.XLS) from the saved location.

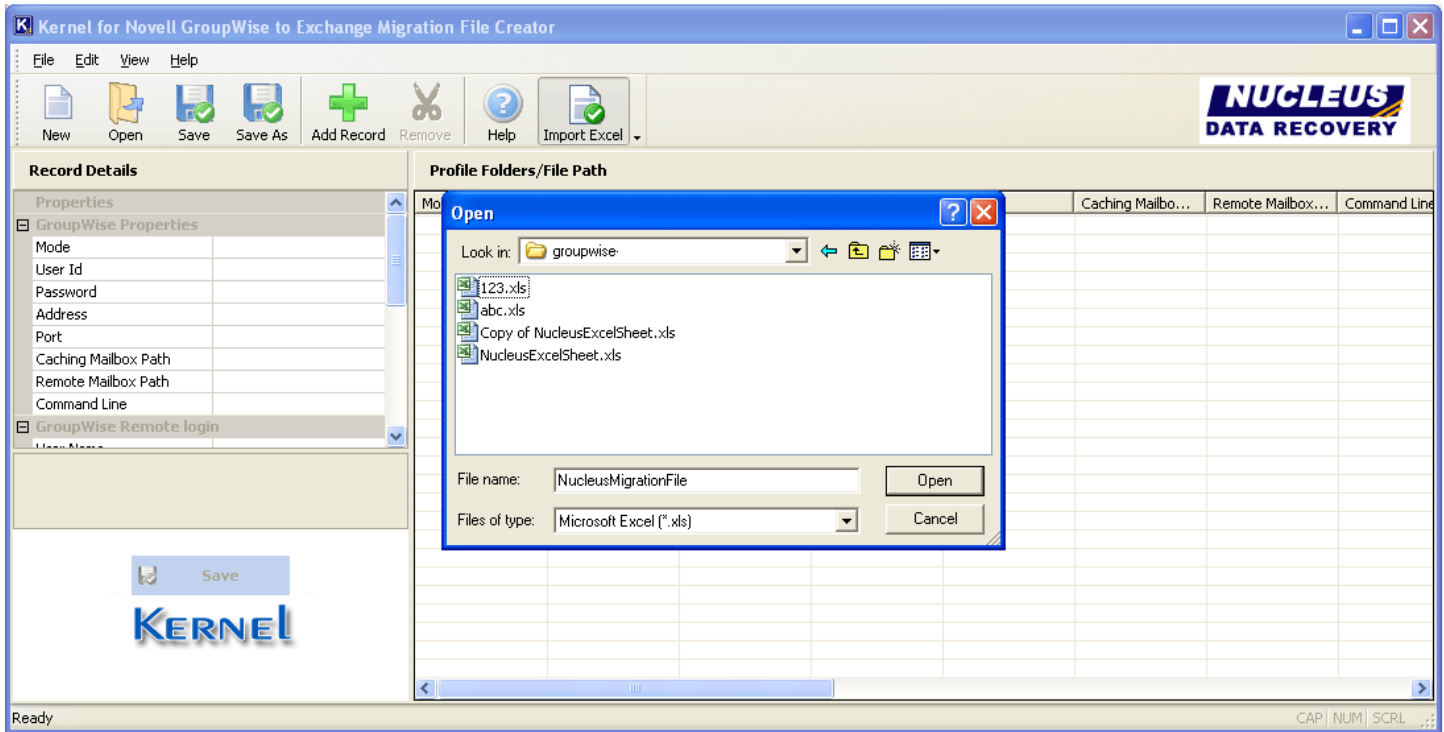


Figure 3.26: Selecting .XLS file

3. Browse and list the excel sheet. As you list the file in software, it displays a window with compilation output for the total records scanned from the excel sheet.

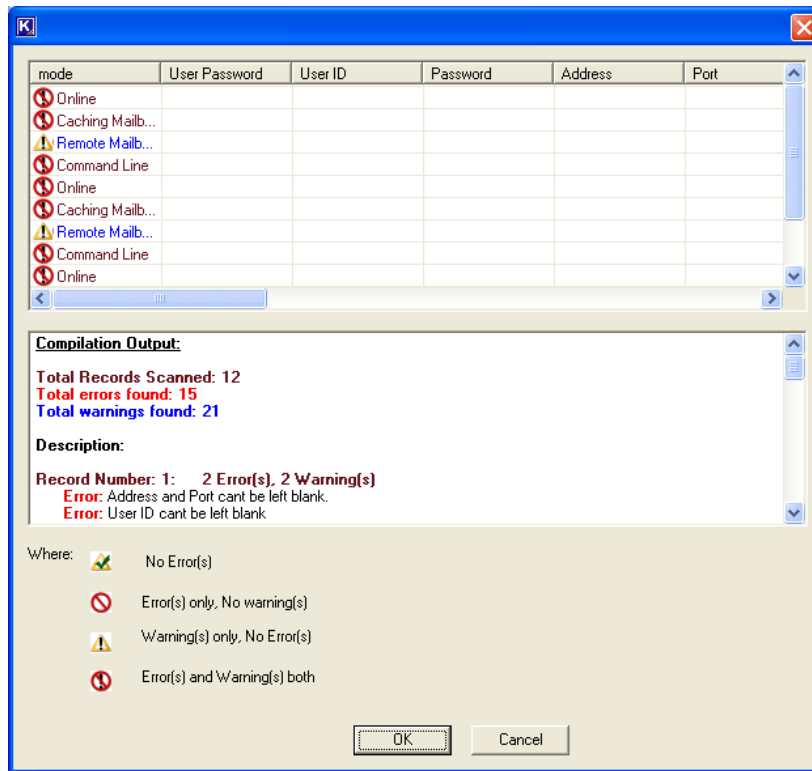


Figure 3.27: Compilation Output

4. Modify the excel sheet as per the compilation output provided by the software. If there are no errors then click **OK** to proceed.

Saved mailbox details get listed in the software.

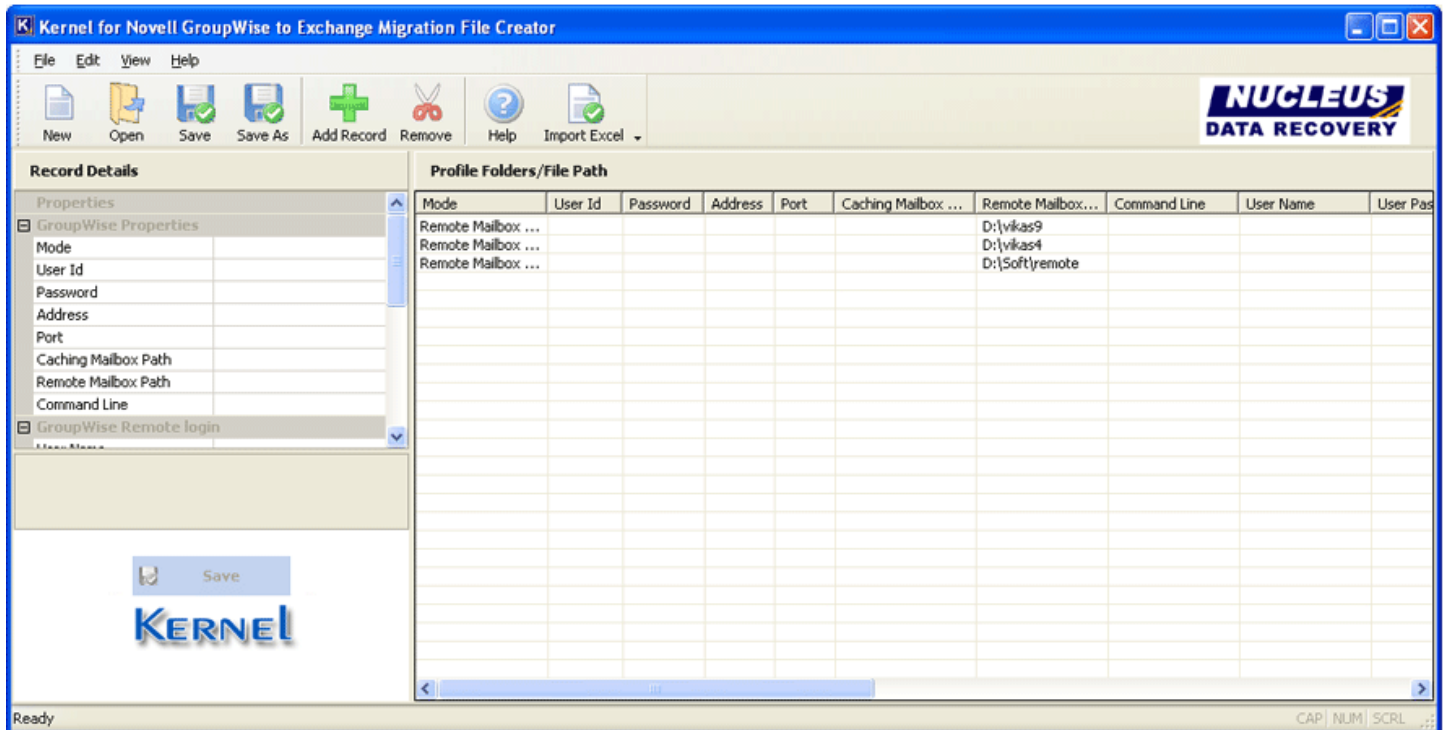


Figure 3.28: Listing of Mailboxes

5. Click the **Save As** button from the toolbar to save the listed items as .NUCON batch file at appropriate location.
6. Launch Kernel for Novell GroupWise to Exchange Migration software- main application and select the option to convert batch of GroupWise Mailboxes and list the .NUCON batch file for migration.

3.2.4 Using .NUCON Batch file for Multiple Mailbox Migration

Now that the .NUCON Batch file has been created, you can easily perform the multiple mailbox migration with the help of .NUCON file. Follow the simple steps given below:

1. Launch Kernel for Novell GroupWise to Exchange software. The main window appears as

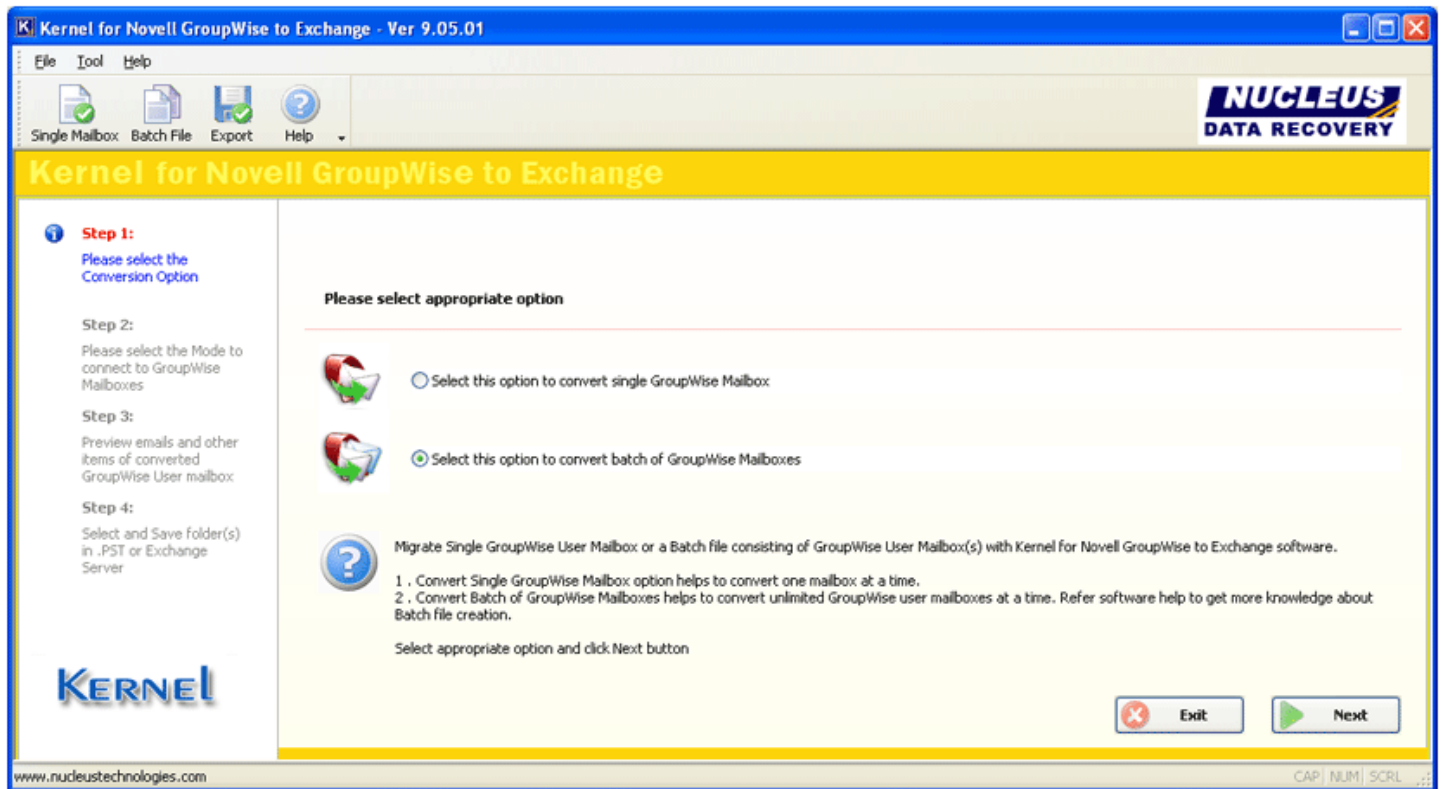


Figure 3.21: Main window

2. Select the **"Select this option to convert batch of GroupWise mailboxes"** radio button and click **Next** button.

The "Open" window gets displayed.

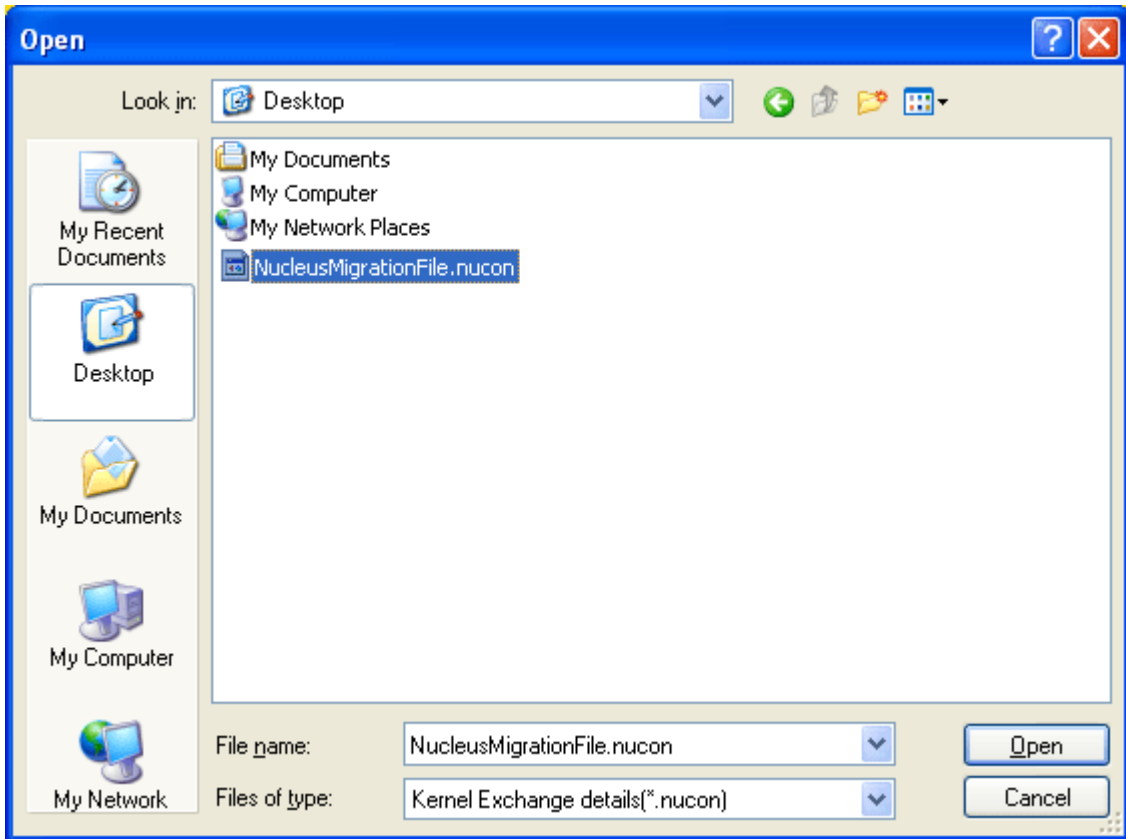


Figure 3.22: 'Open' window

3. Select the batch file of .NUCON file extension and click the "Open" button.

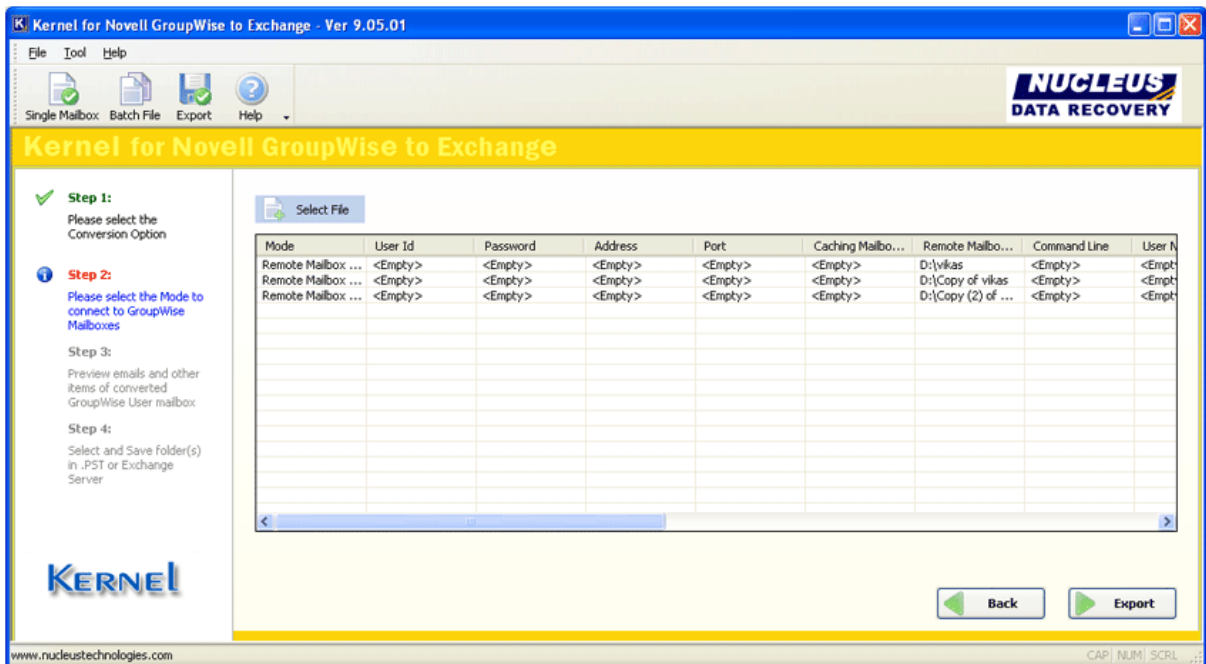



Figure 3.23: .NUCON file listed

4. Click the **Export** button to perform the migration of unlimited GroupWise mailboxes to PST or Exchange Server.

After that the software starts the saving process and saves the converted items at the defined location.

 The saving process is same as described above in Single Mailbox Migration section.

3.2.5 Saving with Exchange Server (for multiple mailbox conversion option)

Save in Exchange Server option for multiple mailbox conversion is pre-defined while creating the batch file of unlimited user mailboxes records in Kernel for Novell GroupWise to Exchange Migration File Creator software. Following is the process which gets followed while saving the files in MS Exchange Server user profiles:

1. Click the radio button '**Select this option to convert batch of GroupWise Mailboxes**'.

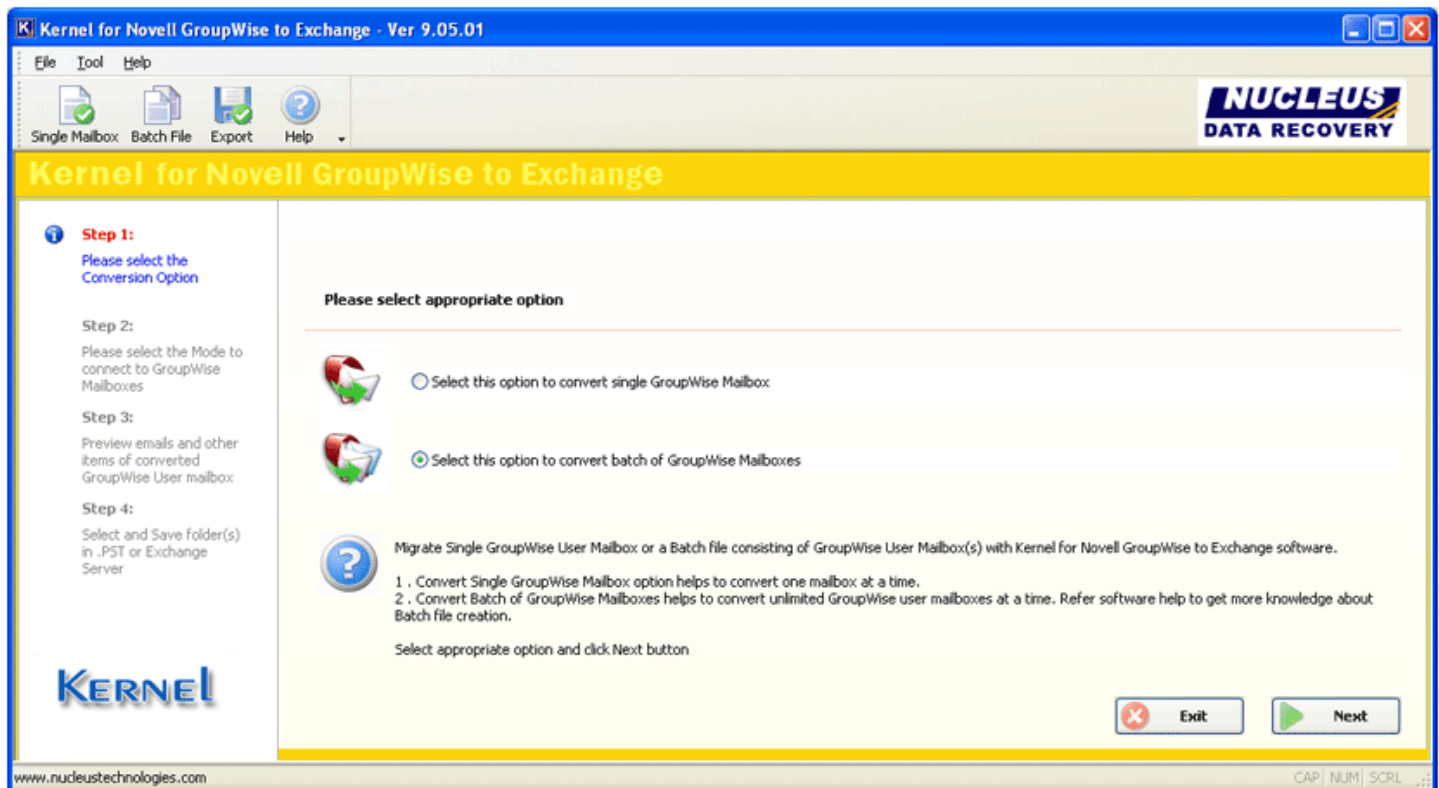


Figure 3.29: Main Window

2. Click '**Next**' to continue.
3. List the .NUCON file (the created batch files) with **Select File** button.

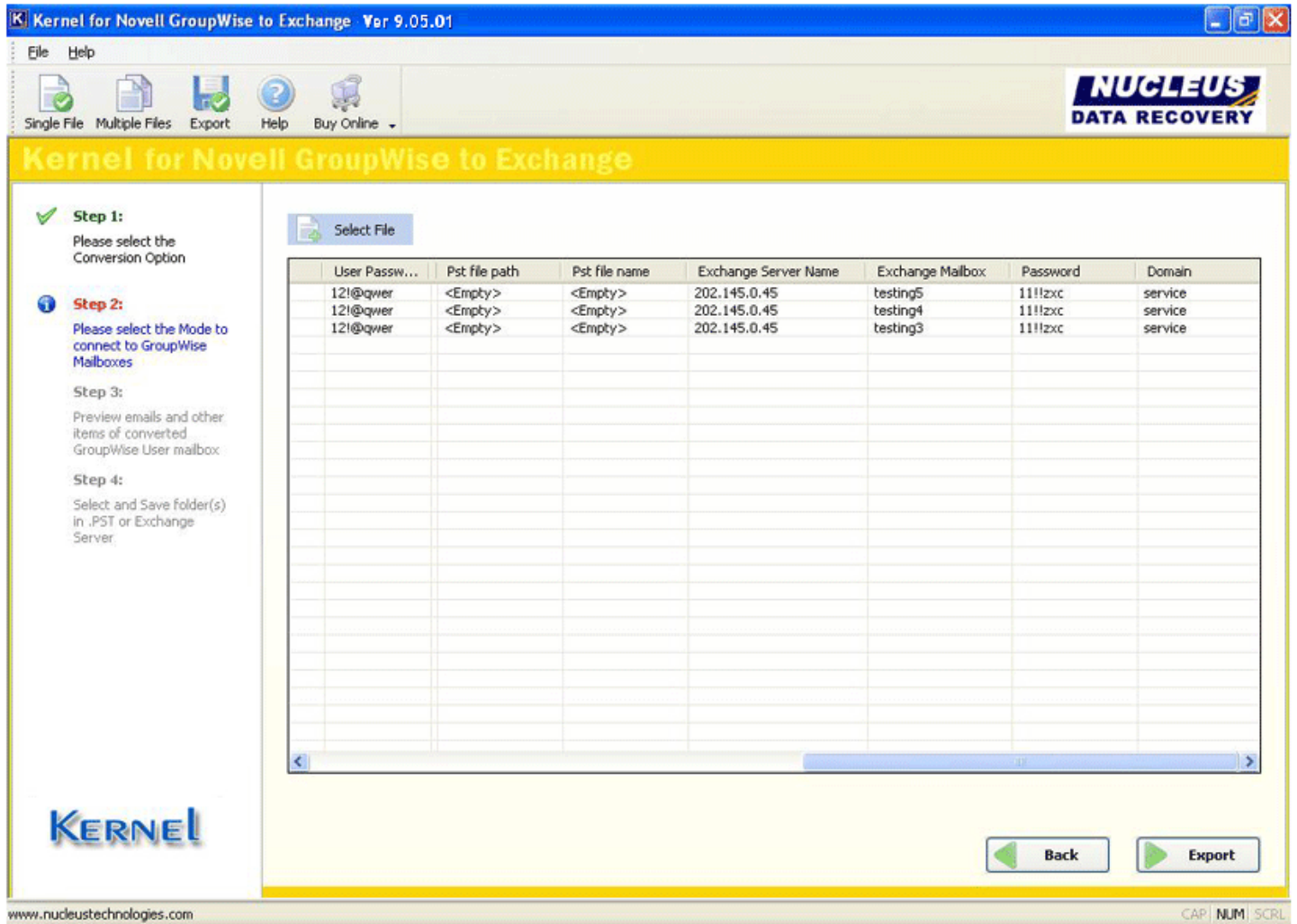


Figure 3.30: Listing of .NUCON file

4. Click the **Export** button.

Software will start saving the files in the defined Exchange Server user profiles.

After successful saving, Kernel for Novell GroupWise to Exchange Server will display the "Saving Complete" message which means that emails and other items of Novell GroupWise mailbox are saved successfully to the User mailbox on MS Exchange Server.


4. Advanced Options to make the Migration More Efficient


Advanced options are provided in Kernel for Novell GroupWise to Exchange software for the user to ease the task of email migration from Novell GroupWise to Exchange mailboxes or PST files, as per the requirement.

4.1 Migration of Archived Emails

Kernel for Novell GroupWise to Exchange features migration of archived items of GroupWise user mailbox(s). Activate the **Show Archive** checkbox from the "Migrate Archive items" section. Following two options are provided for migration of archived items:

- **Use default Archive path:** This option takes the default archive file location of the default user profile configured and opened in Novell GroupWise client.
- **Specify Archive path:** This option takes the file path specified by you for archived file for user mailboxes other than the default one.

 If you have selected Login Mode(s) or Command Line mode then you should always use **Specify Archive path** option to define archive file location of the user mailbox listed in Login or Command Line fields. If **Use default Archive path** option is selected, then the software will display the archived items of default user profile configured in GroupWise for migration.

 When you opt for archive migration, software will list only the archived file items for preview and saving. Other mailbox items are not displayed when you select to migrate archived items.

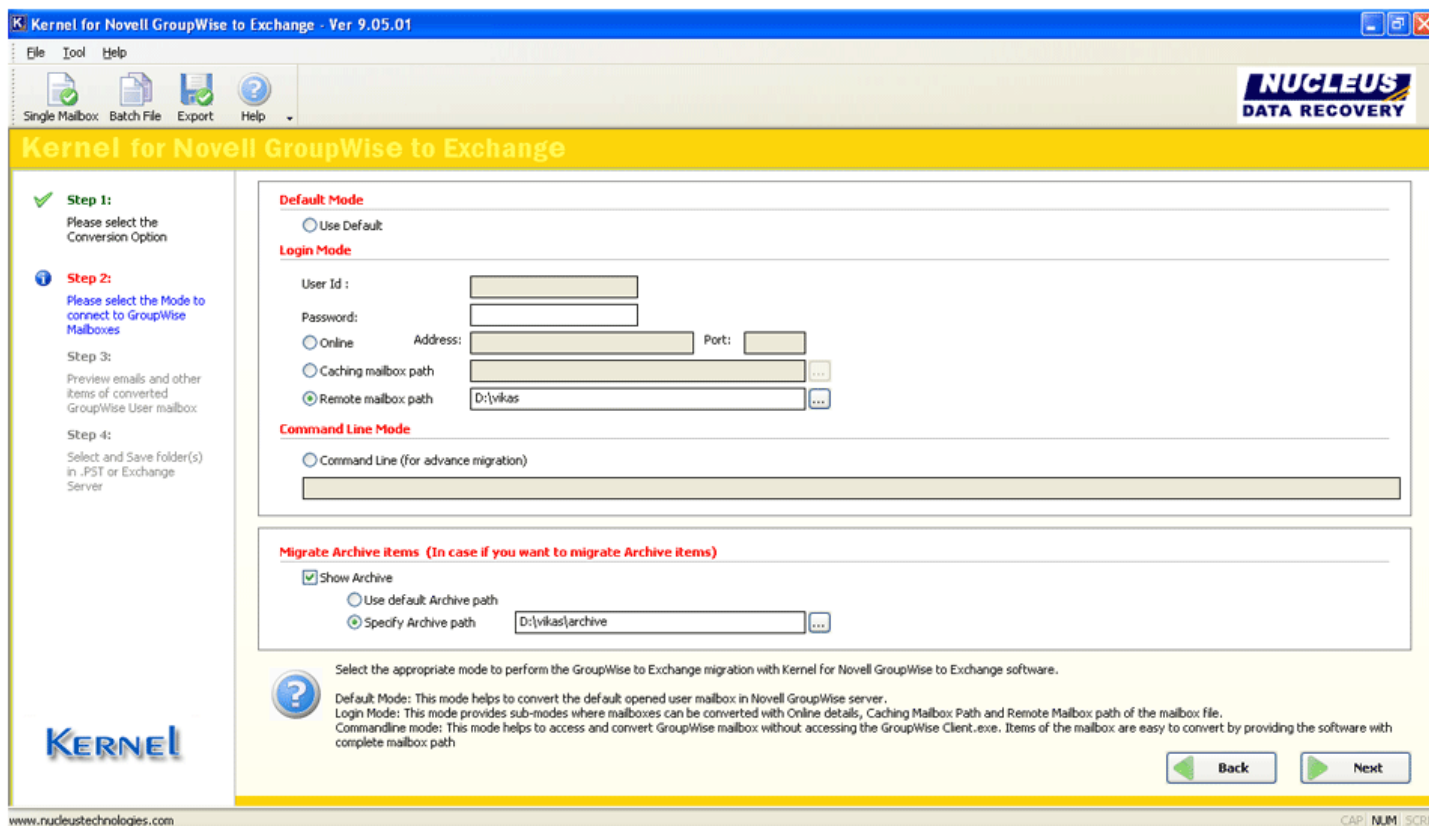


Figure 4.1: Select Archive Option

4.2 Migration of all Address Books

Kernel for Novell GroupWise to Exchange enables migration of all the address books at a go.

Once the .NUCON file is selected for export, software starts the process of saving. Before starting the process, software displays the message for address book migration.

Do you want to export address book also?



Figure 4.2: Message asking for exporting address book

Click **'Yes'** if you want to export address book, otherwise **'No'** if you do not want to.

4.3 Folder Selection for Batch Migration of GroupWise Mailboxes

Advanced options help you to select/deselect various options that filter your migration process.

To view and implement advance options select **Advance Options** from **Tool** menu.

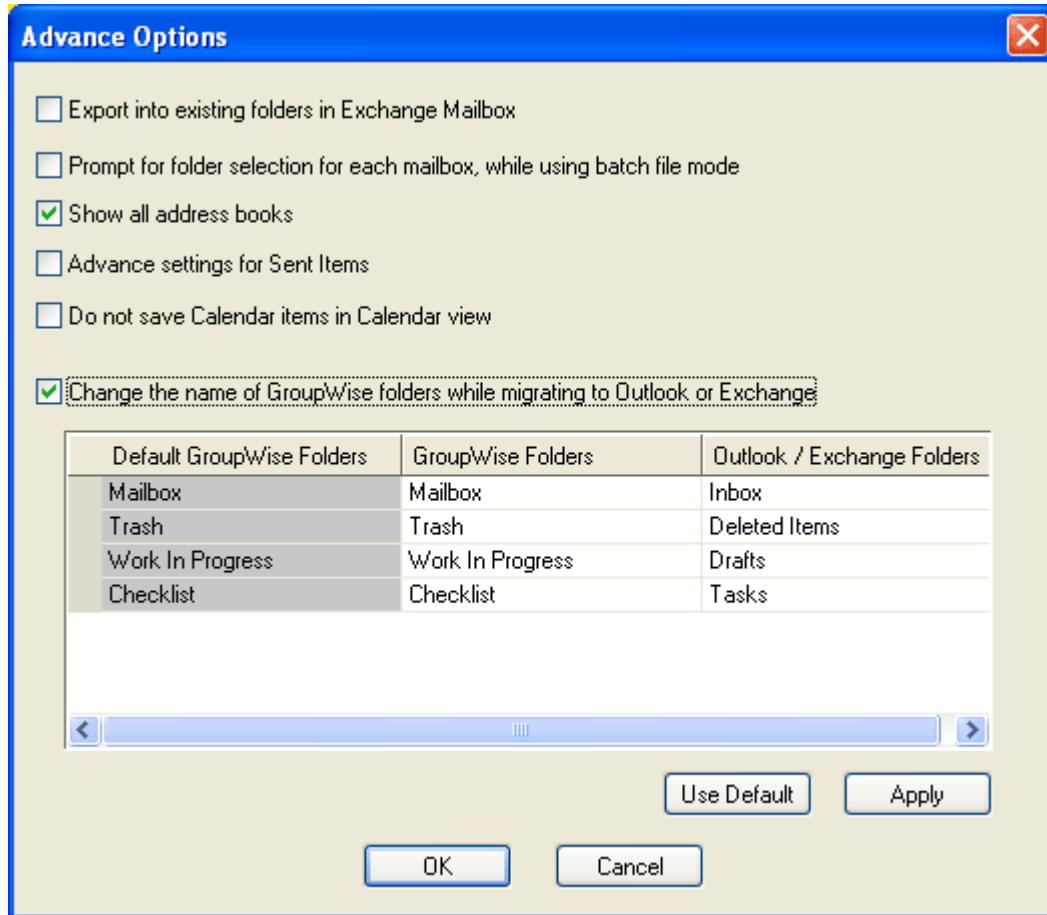



Figure 4.3: Advance Options

4.3.1 Export into existing folders in Exchange Mailbox

Select this option, if you want to save the migrated items into existing folders of MS Exchange Server user mailbox.

 **In case of migrating items from orphan GroupWise folders:** for any folder which exists in GroupWise mailbox but does not exist in the Exchange server mailbox, software will create a new folder of its original name in Exchange mailbox and export items to that folder.

4.3.2 Prompt for folder selection for each mailbox, while using batch file mode

Software enables you to select desired folders for saving during batch file migration process. You can select appropriate folders for saving while performing migration with Kernel batch file of multiple mailboxes at once.

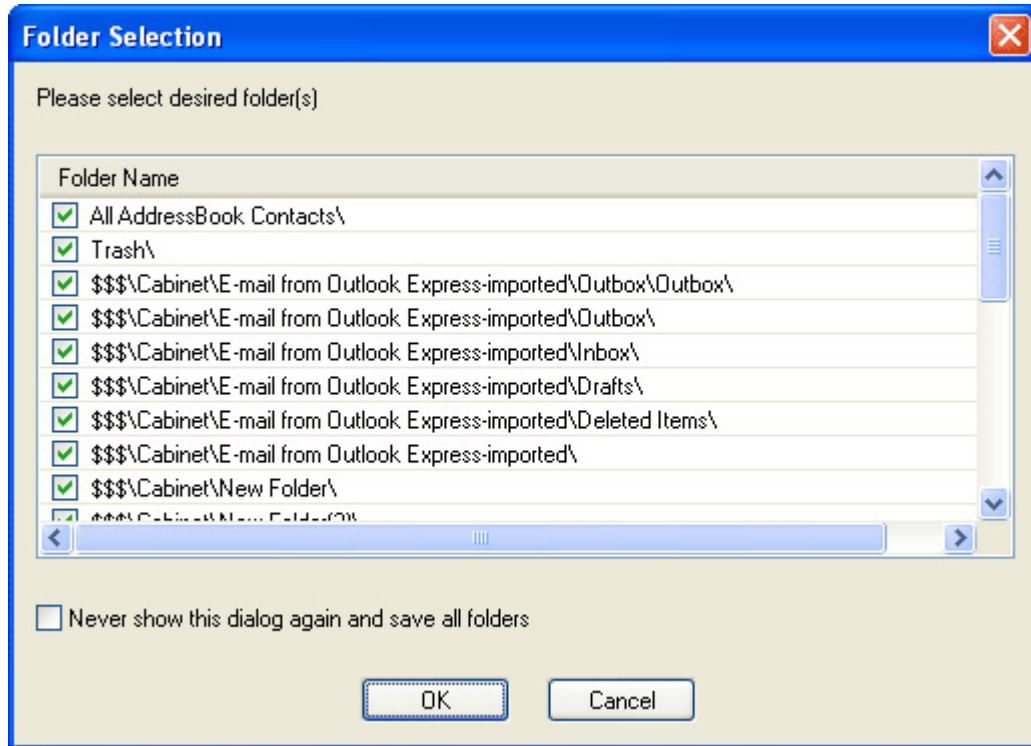


Figure 4.4: 'Folder Selection' window

The **Folder Selection** window appears during the batch migration process, when **Prompt for folder selection for each mailbox, while using batch file mode** checkbox is selected. From this window, you can select the folders to save. If you do not want this dialog box to appear again and again, select the **Never show this dialog again and save all folders** or deselect the "*Prompt for folder selection for each mailbox, while using batch file mode checkbox*" from Advance Options. By this all the folders which exist in the mailbox will get saved automatically and software will not prompt you to select or deselect the folders.

4.3.3 Show all Address Books

Select this checkbox to view all the address books of GroupWise mailbox during mailbox preview before saving the items.

4.3.4 Advance Settings for Sent Items

Select this checkbox to activate advance settings for Sent Items conversion. If in case, the Sent Items folder emails are listed and converted slowly, then select this option to make it fast. Kernel for Novell GroupWise to Exchange software speeds-up the migration process with this option.

4.3.5 Do not save Calendar items in Calendar view

Select this checkbox to save the migrated calendar items in list view in MS Outlook instead of the default calendar view.

4.4 Modifying GroupWise Folder Names as per Outlook/Exchange

You can change the folder names of GroupWise mailbox while migrating to MS Outlook or MS Exchange Server.

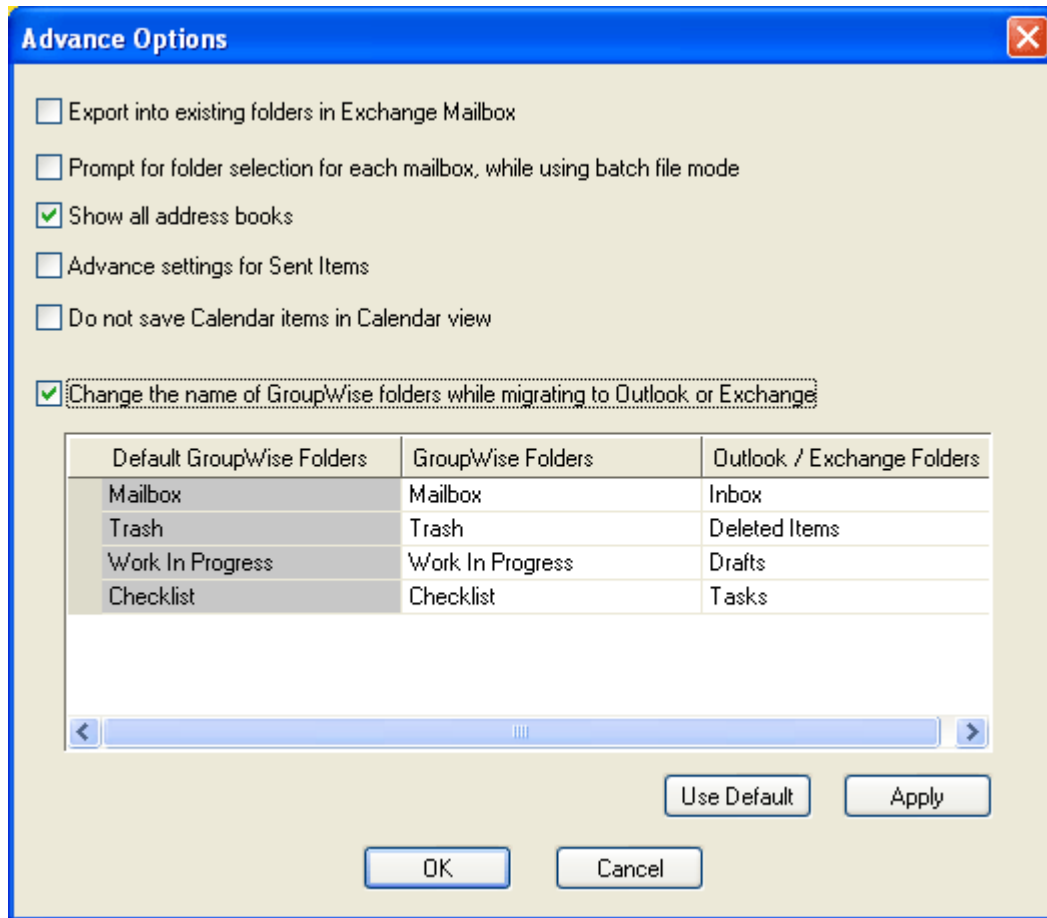


Figure 4.5: Modifying GroupWise Folder Names

Select the checkbox “**Change name of GroupWise folders while migrating to Outlook or Exchange**” to activate the section where Default GroupWise Folders name, GroupWise folders and Outlook/Exchange Folders are listed. From here you can easily modify the folder names of GroupWise mailbox and MS Outlook/MS Exchange Server mailboxes for migration. After that click **Apply** button and then **OK** button.

This option is supportive to Unicode language folder migration.

5. Difference between Evaluation and Full Version

The free to download Evaluation version of Kernel for Novell GroupWise to Exchange is fully functional in its conversion capabilities.

It converts your Novell GroupWise mailboxes and saves them in PST file or in MS Exchange Server mailbox. The demo version shows complete preview of the converted emails with data but will save only first 10 emails per folder existing in the User Mailbox to PST or MS Exchange Server.

Purchasing the Full version delimits the saving restrictions and saves as many user mailboxes as required by the user.

6. Purchase and Support

6.1 Purchase Kernel for Novell GroupWise to Exchange

You must purchase Kernel for Novell GroupWise to Exchange software in order to save entire converted email messages of Novell GroupWise mailboxes. The free evaluation version of Kernel for Novell GroupWise to Exchange software lets you save 10 emails per folder of the converted GroupWise mailbox.


You can purchase the Kernel software through Nucleus Data Recovery website:

<http://www.nucleustechnologies.com/buy-groupwise-to-exchange.php> (encrypted and secure site)

Payment and Delivery

Purchase the Kernel software with our authorized resellers which provide number of payment options for your ease - Paypal, FAX, Credit Card, E-cheque, Pay Order etc. For other methods, please email us to sales@nucleustechnologies.com

After making the purchase transaction with our resellers, we send you an email which consists of activation details and download link of the full version comprising of activation code. This email is sent to the mail address which you have used while processing the purchase transaction with our resellers.

 **Important:** It is advised to avoid using false email address while making the purchase transaction.

6.2 Support Options for Kernel for Novell GroupWise to Exchange

Web Support

Online Help:

If you have queries relating to the use of Kernel for Novell GroupWise to Exchange software, you can visit our online help to have some more clarification to the usage of the software.

Online Help: <http://www.nucleustechnologies.com/Online-Helps.html>

Knowledgebase:

There is extensive knowledgebase which deals with common queries relating to the software:

Visit knowledgebase: <http://www.nucleustechnologies.com/supportdesk/>

Chat Support:

You can also get the help of our experts online by visiting our chat support section. You can communicate directly to our experts online.

Chat Support: <http://www.nucleustechnologies.com/Support.html>

Telephone Support

Helpline:

+91-9818725861

1-866-348-7872 (Toll Free USA/CANADA)

Email Support

For Sales: sales@nucleustechnologies.com

For Support: support@nucleustechnologies.com

For General Queries: contact@nucleustechnologies.com

7. Legal Notices

This section comprises the legal specification about Kernel for Novell GroupWise to Exchange and the company NUCLEUS DATA RECOVERY.COM PRIVATE LIMITED

7.1 Copyright

NUCLEUS DATA RECOVERY.COM PRIVATE LIMITED, Nucleus Kernel accompanied user manual and documentation are copyright of NUCLEUS DATA RECOVERY.COM PRIVATE LIMITED, with all rights reserved. Under the copyright laws, this user manual cannot be reproduced in any form without the prior written permission of NUCLEUS DATA RECOVERY.COM PRIVATE LIMITED. No Patent Liability is assumed, however, with respect to the use of the information contained herein.

© NUCLEUS DATA RECOVERY.COM PRIVATE LIMITED. All rights reserved.

7.2 Trademark

Nucleus Kernel ® is a copyright work of NUCLEUS DATA RECOVERY.COM PRIVATE LIMITED

Windows 95®, Windows 98®, Windows ME®, Windows NT®, Windows 2000 Server®, Windows 2000 Advanced Server®, Windows 2003 Server®, Windows XP®, MS Outlook, MS-DOS, MS Office, MS Exchange Server and Novell GroupWise Client and Novell GroupWise Server are registered trademarks of Microsoft Corporation and Novell Inc.

All other brand and product names are trademarks or registered trademarks of their respective companies.

7.3 Disclaimer

The Information contained in this manual, including but not limited to any product specifications, is subject to change without notice. NUCLEUS DATA RECOVERY.COM PRIVATE LIMITED provides no warranty with regard to this manual or any other information contained herein and here by expressly disclaims any implied warranties of merchantability or fitness for any particular purpose with regard to any of the foregoing NUCLEUS DATA RECOVERY.COM PRIVATE LIMITED assumes no liability for any damages incurred directly or indirectly from any technical or typographical errors or omissions contained herein or for discrepancies between the product and the manual. In no event shall NUCLEUS DATA RECOVERY.COM PRIVATE LIMITED, be liable for any incidental, consequential special, or exemplary damages, whether based on tort, contract or otherwise, arising out of or in connection with this manual or any other information contained herein or the use there of.

7.4 License Agreement

Kernel for Novell GroupWise to Exchange software is Copyright work of NUCLEUS DATA RECOVERY.COM PRIVATE LIMITED

Your Agreement to this License

You should carefully read the following terms and conditions before using, installing or distributing this software, unless you have a different license agreement signed by NUCLEUS DATA RECOVERY.COM PRIVATE LIMITED. The terms and conditions of this License describe the permitted use and users of each Licensed Copy of Kernel for Novell GroupWise to Exchange software. For purposes of this License, if you have a valid license, you have the right to use a single Licensed Copy of Nucleus Kernel.

Scope of License

Each Licensed Copy of Kernel for Novell GroupWise to Exchange software may either be used by a single person or used non-simultaneously by multiple people who use the software personally installed on a single workstation. All rights of any kind in Nucleus Kernel, which are not expressly granted in this License, are entirely and exclusively reserved to and by NUCLEUS DATA RECOVERY.COM PRIVATE LIMITED. You may not rent, lease, modify, translate, reverse engineer, decompile, disassemble, or create derivative works based on, Nucleus Kernel, nor permit anyone else to do so. You may not make access to Nucleus Kernel available to others in connection with a service bureau, application service provider, or similar business, nor permit anyone else to do so.

Warranty Disclaimers and Liability Limitations

Kernel for Novell GroupWise to Exchange software, and any and all accompanying software, files, data and materials, are distributed and provided as is and with no warranties of any kind, whether expressed or implied. In particular, there is no warranty for the quality of data recovered. You acknowledge that good data processing procedure dictates that any program, including Nucleus Kernel, must be thoroughly tested with non-critical data before there is any reliance on it, and you hereby assume the entire risk of all use of the copies of Nucleus Kernel covered by this License. This disclaimer of warranty constitutes an essential part of this License. In addition, in no event does NUCLEUS DATA RECOVERY.COM PRIVATE LIMITED authorize you or anyone else to use Kernel for Novell GroupWise to Exchange software in applications or systems where Kernel for Novell GroupWise to Exchange software failure to perform can reasonably be expected to result in a significant physical injury, or in loss of life. Any such use is entirely at your own risk, and you agree to hold NUCLEUS DATA RECOVERY.COM PRIVATE LIMITED harmless from any and all claims or losses relating to such unauthorized use.

General

This License is the complete statement of the agreement between the parties on the subject matter, and merges and supersedes all other or prior understandings, purchase orders, agreements and arrangements. This License shall be governed by the laws of the State of Delhi. Exclusive jurisdiction and venue for all matters relating to this License shall be in courts and for a located in the State of Delhi, and you consent to such jurisdiction and venue. There are no third party beneficiaries of any promises, obligations or representations made by NUCLEUS DATA RECOVERY.COM PRIVATE LIMITED herein. Any waiver by NUCLEUS DATA RECOVERY.COM PRIVATE LIMITED of any violation of this License by you shall not constitute, nor contribute to, a waiver by Nucleus Data Recovery of any other or future violation of the same provision, or any other provision, of this License.